

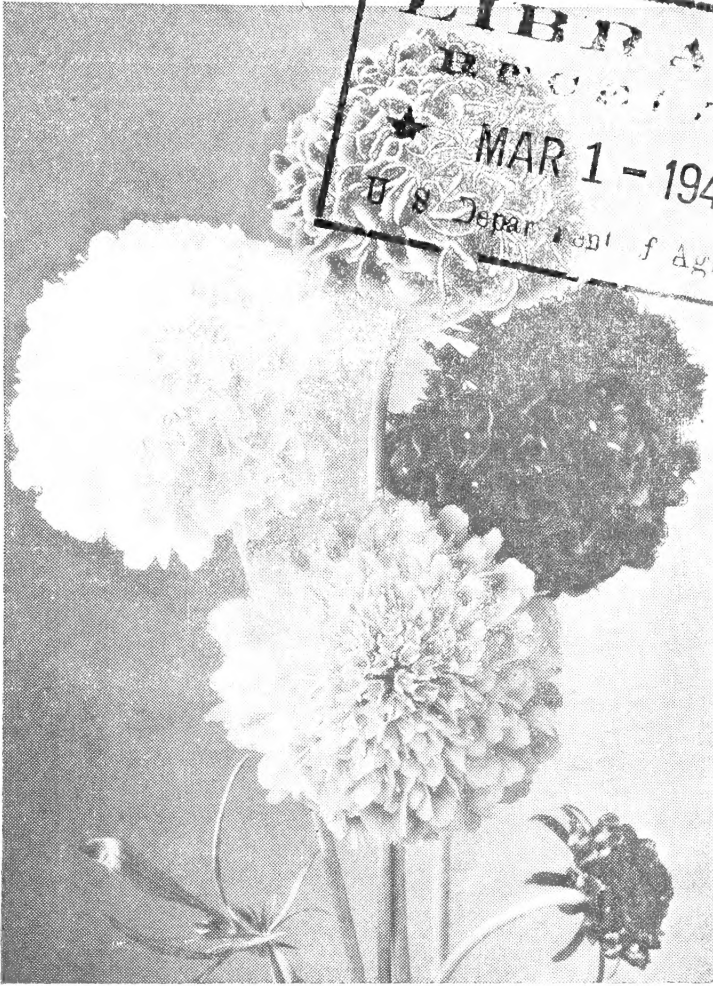
Historic, Archive Document

Do not assume content reflects current scientific knowledge, policies, or practices.



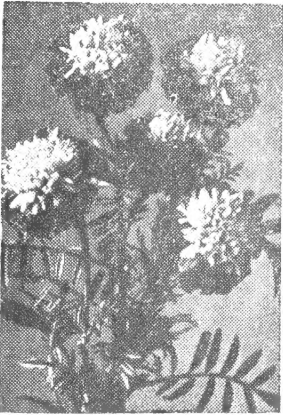
62.11

GARDEN BOOK-SPRING 1946

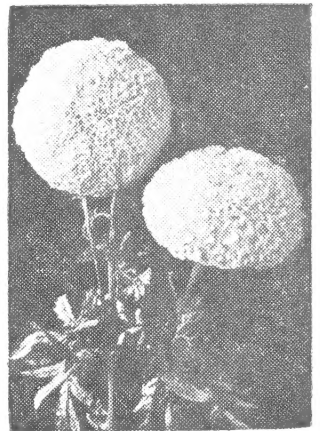


LIBRARY
 RECEIVED
 MAR 1 - 1946
 U.S. Department of Agriculture

Scabiosa—Morning Bride Giant Hybrid



Marigold
Harmony Hybrid
New Strain



Marigold
Mission-Giant
Yellowstone

MILE HIGH SEED CO.

Retail Store, 118 North Fourth St.

Grand Junction, Colo.

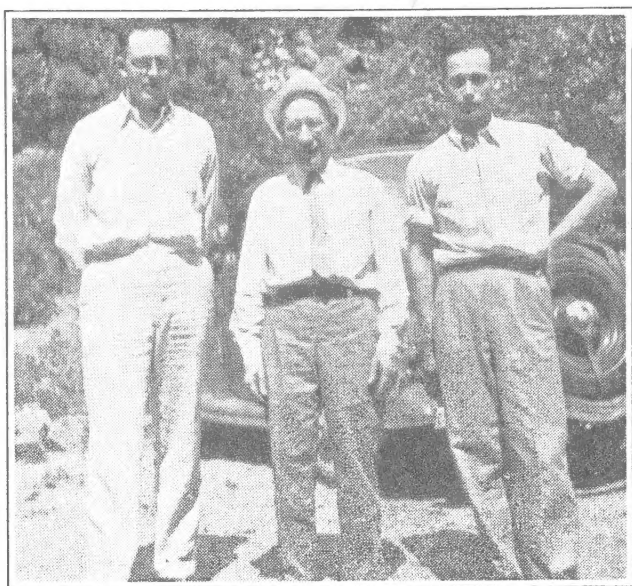


Hello, Friends



We Need
Gardens
This
Year
More
Than
Ever
Before

Plant
And
Can



TRUMAN
Parks

NEAL
Plaisted

BOB
Hill

Vegetable
Seed
Prices
Are
Down

Quality
Has
Gone
Up—To
Aid
Gardening

FRIENDS:

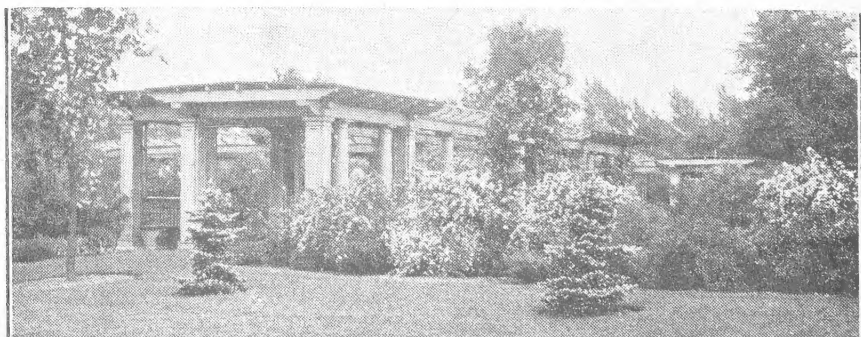
I just want to say we are all still on the job, as well as nearly all of our staff, that have served you so faithfully in the past years. We are sticking to the same policy —**quality first** and then the best price at which **quality seed** can be sold.

I would like to take two or three pages telling all of you how we appreciated what your **good will and confidence** has done to build up and expand The Mile High Seed Company. With your aid, we have tripled our business volume in five years. As space is at a premium, we are just going to say to one and all of you, "Many Thanks."

All Garden and Flower Seed prices in quantities listed in this catalogue are postpaid.

Field Seed prices change with farm commodities. These prices will be found on the back of the enclosed order blank, and are not postpaid except in one-pound lots. Use this blank when ordering.

If you grow a large garden, or if you wish to buy large quantities of grass, clover, alfalfa or seed grain, be sure to write us for special prices. We are always glad to answer your letters.



A Beautiful Lawn With Mile High Lawn Mixture

We carry large stocks of Kentucky Blue Grass, White Dutch Clover, English Blue Grass, Bent Grass, Perennial Rye and Domestic Annual Rye Grass. All prices quoted on the yellow price list enclosed. We shall be glad to suggest mixtures for best results for all types of soil. Ask us to quote prices on large quantities.

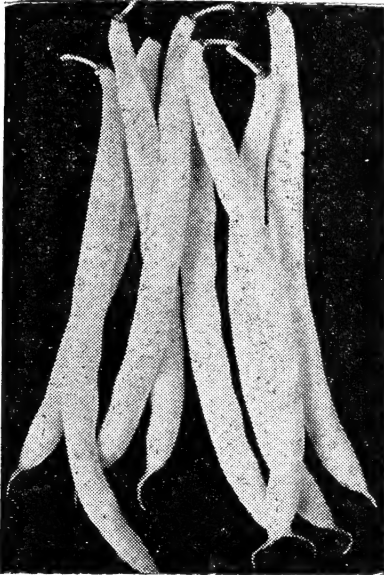
ASPARAGUS

254 **Mary Washington.** The largest, most desired variety of asparagus. Is of the rust-resistant type and very productive. Pkt, 5c; oz, 15c; ¼ lb, 50c; lb, \$1.75; postpaid.

BEANS

Our beans have been carefully hand picked and will reach you clean. 1 lb. to 200 ft. of row, 35-40 lbs. per acre.

281 **Round Pod Kidney Wax or Brittle Wax.** (59 days.) A bean of superb quality for all purposes and wonderfully productive. Finest for canning because it is entirely stringless. Round pods, medium vine.



Brittle Wax

286 **Pencil Pod Black Wax.** (59 days.) Stringless, thick, meaty pod, averaging 6 in. long. Seeds black. A very good bean.

268 **Tendergreen New Stringless.** (55 days.) Green pod, plants medium, heavy producer, beautiful dark green straight pods, round, meaty. This is our choice of all green pod beans. We believe it will completely replace both Burpee and Giant Stringless.

267 **Giant Stringless.** (55 days.) Like Burpee, but pods are larger.

261 **Bountiful Stringless.** (55 days.) Prolific producer of long, well filled pods. A wonderful bean.

263 **Plentiful (Black-Seeded Bountiful).** (52 days.) All-American selection. Pods green, 7 in. long; thick, meaty and stringless. Vine 16 to 18 in. high; vigorous.

266 **Burpee or Landreth Stringless.** (53 days.) An improved Burpee, large pods, tender and stringless, one of the best home garden beans.

295 **Kentucky Wonder.** (65 days.) Pole bean. Strong climber, hardy and very prolific over a long season, bearing until frost comes; older beans slightly stringy.

320 **Henderson's Bush.** (65 days.) The Baby Lima or Butter Bean.

Prices on above: Pkt, 5c; ¼ lb, 10c; ½ lb, 20c; lb, 40c; 10 lbs, \$3.25, postpaid.

316 **Burpee's Improved Bush Lima Beans.** (75 days.) Beans white with greenish tinge. Plants are large, erect and very productive.

317 **Fordhook Bush Lima Beans.** (75 days.) Large vigorous plants; beans thick and of excellent quality.

314 **King of the Garden Pole Lima.** (88 days.) Most popular pole lima. Large pods, flat beans.

Prices: Pkt, 10c; ¼ lb, 15c; ½ lb, 30c; lb, 45c; 10 lbs, \$3.80, postpaid.

BEETS

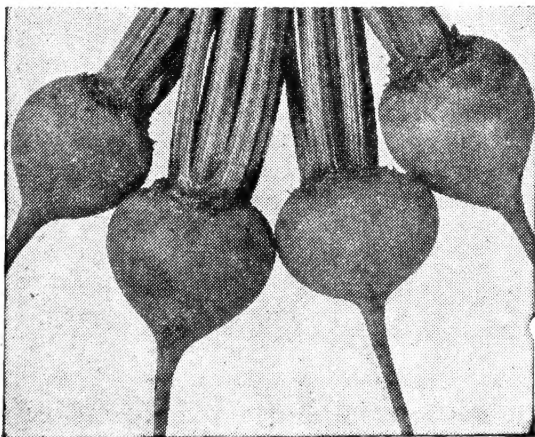
Beets may be planted as early as condition of the soil will permit, 1 inch deep, rows 16 inches apart. Plant them thick and thin out, using young plants for beet greens.

327 **Detroit Dark Red.** (55 days.) An old-time standard for home and market garden, shipping and canning.

334 **Canner's Favorite.** (52-55 days.) Dark blood-red.

324 **Early Wonder or Early Model.** (48 days.) A fine selection from Crosby's Egyptian, a little smaller and earlier.

326 **Crosby's Egyptian.** (55 days.) Probably the most widely used of all varieties of beets. Early, good size and good yield.



Canner's Favorite

328 **Improved Early Blood Turnip.** (65 days.) A medium early variety, good for summer or winter.

Pkt, 5c; oz, 10c;
¼ lb, 35c; 1 lb,
\$1.25, postpaid

337 **Swiss Chard. Lucullus.** (50 days.) Leaves yellowish green and heavily crumpled. A fine vegetable.

Pkt, 5c; oz, 10c;
¼ lb, 30c; 1 lb,
\$1.00, postpaid

MANGELS

Yield as high as 20 tons per acre. Fine for stock or poultry in winter as a substitute for green feed. 1 oz. to 100 ft. of row; 5 to 6 pounds per acre.

- 345 Dairy Giant Mangel. (95 days.) Especially recommended to dairymen. Grows half above ground and is easily harvested. Reddish yellow; small top.
- 346 Prize Mammoth. (100 days.) Yields up to 40 tons. Red roots; mostly above ground; excellent keeper.
- 339 Danish Sludstrup. (110 days.) Introduced by Danish government; extra good quality and yield.
- 342 Long Red. (120 days.) Immense crops; flesh white, shaded red. Very long mangel.

All priced: oz, 10c; ¼ lb, 30c; 1b, 95c; 5 lbs, \$4.50; postpaid.

BROCCOLI

Cultivated and used like cauliflower. Adapted to moist, long-season sections.

- 348 Green Christmas Calabrese. It is of branching growth with tender, loosely formed, delicious green heads.

Pkt, 5c; ½ oz, 15c; oz, 25c; ¼ lb, 80c; 1b, \$2.40, postpaid.

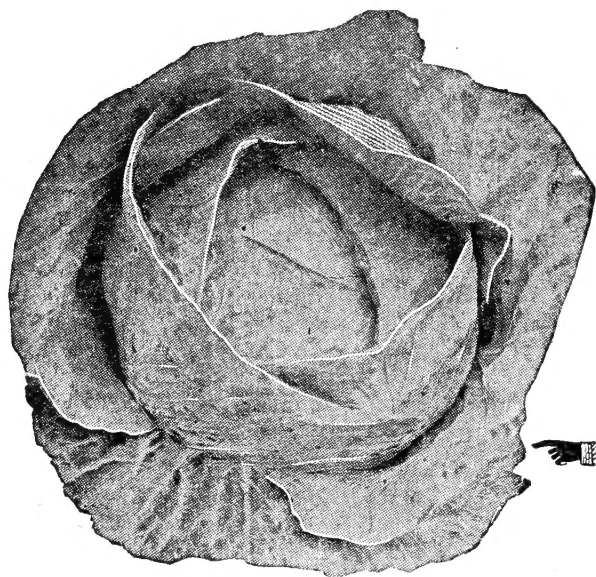
BRUSSELS SPROUTS

Sprouts like small cabbages form on stalk of plant; more delicate flavor than cabbage.

- 351 Long Island Improved. (110 days.) Choice, compact variety.

Pkt, 5c; ½ oz, 25c; oz, 45c; postpaid.

CABBAGE



Our cabbage seed is the result of years of careful selection. Contains vitamins A, B and C, when used cooked or raw. Ounce to 2,000 plants.

- 366 Earliest Of All. (60 days.) Earliest round head cabbage. Small but solid; quality is equal to that of Copenhagen Market.

- 365 Golden Acre. (63 days.) Our strain of Earliest of All is a little finer selection.

- 352 Copenhagen Market. (68 days.) One of the best early round heads.

Large, solid, fine grained and fine flavored.

- 355 Glory of Enkhuizen. (80 days.) Some larger and a little later than Copenhagen, used for kraut.

- 358 Stein's Early Flat Dutch. (80 days.) The heads are large, flat and of the finest quality. Valued for its ability to resist heat.

- 356 Early Jersey Wakefield. (70 days.) Cone-shaped; sweetest flavor. Home garden favorite.

- 361 All Head Early. (80 days.) Somewhat larger than Stein's and later. Flat head.

- 377 Perfection Drumhead, Savoy. (90 days.) Solid heads, with crumpled leaves.

- 374 Mammoth Red Rock. (110 days.) Deep red.

- 376 Chinese or Celery Cabbage. For salads.

- 373 Mountain Ballhead, Short Stem. (120 days.) The peak of perfection in a late cabbage. Surpasses all others in size, productivity and hard, tight heads.

All Cabbage: Pkt, 5c; ½ oz, 20c; oz, 35c; ¼ lb, \$1.10; 1b, \$3.40; postpaid.

CAULIFLOWER

Our seed has established a wonderful reputation. A favorite delicacy; a money-making crop. 1 oz. to 2,000 to 3,000 plants; 8,000 plants per acre.

- 424 Special High Altitude Danish Snowball. (85 days.) Our extra fine selection for early pure white heads, size, uniformity and freedom from blemishes. We recommend it for your shipping crop or home use. Pkt, 10c; 1/16 oz, 30c; ¼ oz, 85c; ½ oz, \$1.45; oz, \$2.45; ¼ lb, \$7.25; 1b, \$21.00; postpaid.

- 423—Early Danish Snowball. (85 days.) A good commercial and shipping strain. Pkt, 5c; ¼ oz, 65c; oz, \$1.95; ¼ lb, \$5.85; 1b, \$17.50; postpaid.



**Red Cored
Chantenay**

CARROTS

Raw carrots contain vitamins A, B and C. An oz. of seed plants 150 ft. Cover seed $\frac{1}{2}$ in. or less.

- 388 **Improved Red - Cored Chantenay.** (65 days.) Orange-red, very tender and of finest flavor; indistinct core; good keeper and shipper.
- 387 **Special Strain Oxheart.** (65 days.) An extra select strain of this stump-rooted carrot.
- 386 **Imperator.** (77 days.) Uniformly tapered to a semi-blunt end. A fine new carrot.
- 383 **Chantenay or Half Long Model.** (60 days.) Old type, core rather large and definite.
- 384 **Danvers Half Long.** (65 days.) A heavy yielding general crop variety.
- 385 **Nantes.** Half long, nearly coreless. Above Carrots priced: Pkt, 5c; oz, 15c; $\frac{1}{4}$ lb, 50c; lb, \$1.65; postpaid.

STOCK CARROTS

- 389 **Large White Belgian.** (85 days.) For feeding stock. An enormous yielder.
- 391 **Yellow Belgian.** (95 days.) Very large and a heavy yielder, light orange color, relished by all livestock. Oz, 15c; $\frac{1}{4}$ lb, 50c; lb, \$1.65; postpaid.

CELERY

Should be planted in house-boxes or hotbeds about March 15th; winter celery about April 15th. Winter celery can be transplanted in the open ground as late as June 15th.

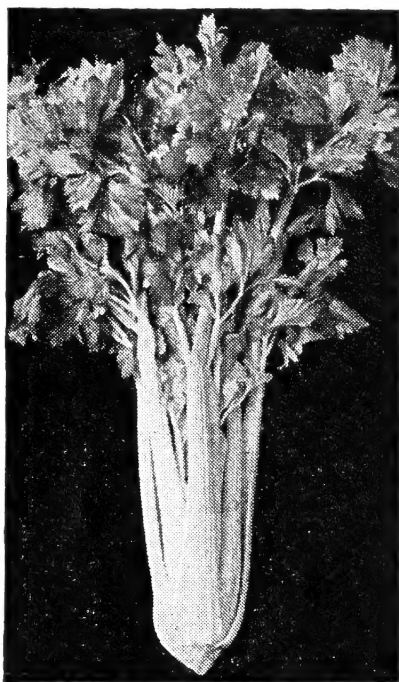
- 427 **Golden Plume or Wonderful.** (110 days.) Very early; large heart. Pretty golden color; vigorous, and blanches quickly.
- 429 **Golden Self Blanching.** (120 days.) Is of light yellow color; ribbed stalks, crisp and tender. Blanches easily.
- 433 **Giant Pascal.** (140 days.) Good type.

All above priced: Pkt, 5c;
 $\frac{1}{2}$ oz, 35c; oz, 60c; $\frac{1}{4}$ lb, \$1.75.

- 434 **Utah, or Golden Crisp.** (130 days.) Winter celery. Round, thick, solid stems; very mild, nutty flavor.

- 432 **Crystal White Utah Strain.** (125 days.) Often growing 36 in. high, more heart than any other celery. Can be used for a fall celery or for trench blanching, blanches to a creamy white. Stringless, nutty flavor.

Pkt, 10c; $\frac{1}{2}$ oz, 60c; oz, \$1.15; $\frac{1}{4}$ lb, \$3.50.



Colorado Pascal

431 **Giant Colorado Pascal. Dwarf Strain**—developed especially for the shipping trade. Dwarf stalky growth, free from soft spongy stalks. Blanches easily to a creamy white; for early market. Also the very best for winter trenching. This is the celery that has made Colorado famous; thousands of shipments go out each season as Christmas gifts. Pkts, 20c; $\frac{1}{2}$ oz, \$1.60; oz, \$3, postpaid.

POP CORN

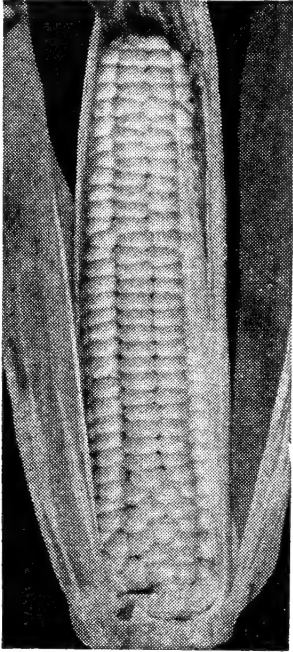
One ounce to 65 feet of row; 4 to 6 pounds per acre.

- 456 **Creamy Crisp, or South American.** Grains are creamy yellow, large, crisp and delicious.
- 457 **Japanese Hulless, or Australian Hulless.** Pops white. Stalk dwarf; ears short, with pointed kernels. Widely used. Pop Corn prices: Pkt, 5c; $\frac{1}{2}$ lb, 15c; lb, 25c; 10 lbs, \$1.85; postpaid.

SWEET CORN

You get the sweetest corn fresh from your own garden.

- 455 Golden Gem. (55 days.) Very earliest and of Bantam quality. Ears not quite as large.
 444 Spanish Gold. (56 days.) The best of the real earlies. Good sized ear; finest quality.
 445 Golden Bantam. (70 days.) Still a big seller. Everyone knows this popular variety.



Spanish Gold

- 446 Improved Golden Bantam. (75 days.) Has larger and deeper kernels than Golden Bantam; same fine flavor.
 450 Country Gentleman. (95 days.) Large ears with kernels of uneven size and shape. One of the sweetest and best flavored varieties. A heavy yielder of corn and fodder.
 452 Golden Giant. (80 days.) A cross of Golden Bantam. Larger and later; fine quality.
 448 Stowell's Evergreen. (90 days.) The ears are large, sweet and tender. Fine table corn; also the favorite for canning.
 447 Oregon Evergreen. (80 days.) An earlier cross of Stowell's; in our opinion a little better. Strong, firm husks prevent worm damage to a large degree.
 439—Golden Sunshine. (60 days.) The same flavor and color as Golden Bantam, but 10 days earlier. The ears are also larger, being 12-rowed instead of 8.

All above Corn priced: Pkt, 5c; ¼ lb, 10c; ½ lb, 20c; 1b, 35c; 10 lbs., \$2.70, postpaid.

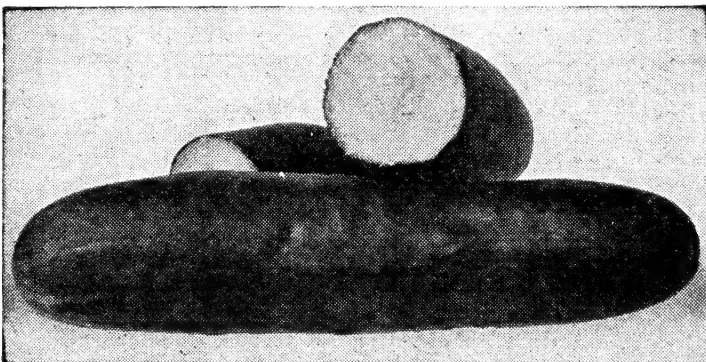
CUCUMBERS

White Spines are best for slicing, shipping or market garden; Black Spines for pickling. An ounce plants about 100 feet of row.

- 473—Colorado. (65 days.) Real Quality. We believe our strain of this new variety is the finest slicing and shipping cucumber you can buy. It's the deepest of green, with the purest white and the finest flavored flesh of any we grow. Size 2½ by 10 inches; free from white striping; well rounded full ends.
 479—Ward's Dark Green. (Selected Stays Green). (50 days.) Early type. It keeps green; that is, retains its deeper green color longer than most varieties. Very early and probably the most prolific.
 470—Early Fortune. (58 days.) Very attractive slicing and shipping variety. Early, productive and disease resistant. Cucumbers, 9 inches long.
 477 Improved Long Green. (65 days.) The standard home garden, slicing and pickling type. Prolific, hardy and disease resistant. Beautiful long cucumbers.

Above priced: Pkt, 5c; oz, 20c; ¼ lb, 70c; 1b, \$2.25. Postpaid

- 467 Prolific Gem Pickling. (50 days.) The heaviest yielder of all the picklers. Crisp cucumber, slender in form and tapering at both ends.
 465 Chicago Pickling, Westerfield. (60 days.) Very uniform type. Grows large enough to use for dill pickles.
 464 Boston Pickling. (55 days.) Early and productive. Short, fairly smooth cucumbers of very symmetrical shape.
 463 West India Gherkin. (60 days.) A very prolific, small fruited variety, used exclusively for pickling.



Colorado

- 489 Ward's Lemon Cucumber. (70 days.) Small fruits similar in shape and color to the lemon.

Pickling Cucumbers:

Pkt. _____ 5c
 Oz. _____ 15c
 ¼ Lb. _____ 50c
 Lb. _____ \$1.65

Postpaid.

GARLIC

Grown from bulbs only; divide bulbs in planting.

½ lb, 35c; 1b, 70c; postpaid.

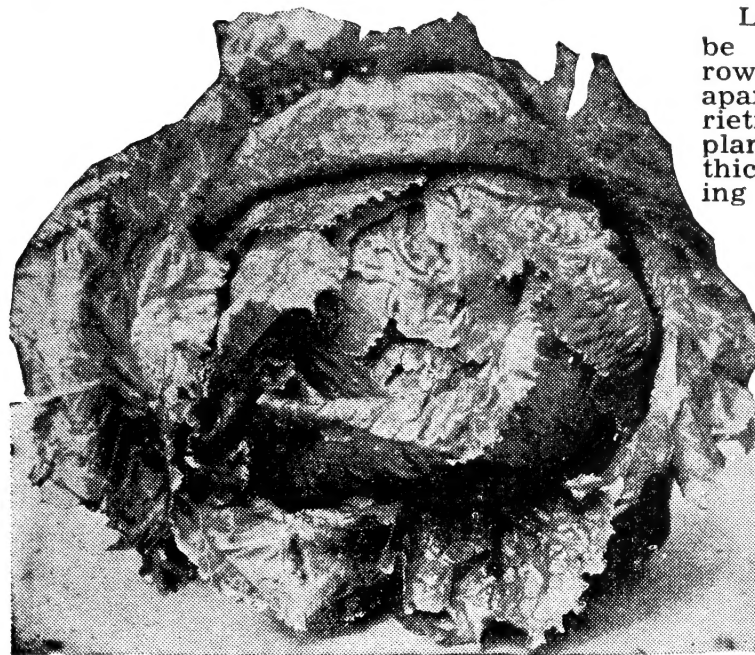
HYBRID SWEET CORN

Far superior to open pollinated sweet corn. Husk wraps higher and tighter on ear, less worm damage. Ears more uniform, better yielder, fine flavor, sturdy stalks and roots.

Hybrid seed not true to type the second year.

- 442 **Golden Cross Bantam.** (80 days.) Has all the advantages of the Hybrid; sturdy, healthy stalks, ears 10- to 14-rowed; very uniform in plant and ear.
- 440 **Tendergold.** (70 days.) Top cross Spanish Gold, stalks medium, deep kernels, beautiful golden color; 10 to 12 rows.
- 443 **Spancross.** (65 days.) Medium-size ears, 6 to 7 inches long beautiful yellow, 12-rowed, sturdy stocks, extremely early, good quality.

Hybrid Corn prices: Pkt, 5c; $\frac{1}{4}$ lb, 15c; $\frac{1}{2}$ lb, 25c; lb, 45c. Postpaid.

LETTUCE

Lettuce should be planted in rows 18 to 24 in. apart. Leaf varieties can be planted quite thick; the heading varieties require less seed and should be thinned to one plant every 6 to 8 inches.

544 **Special Strain New York.** (80 days.) Selected for solid, hard heads and trueness to type; fine eating qualities.

- 532 **Mile High Wonder.** (80 days.) Our own selection from the New York type. More sure to head and not as subject to tip burn.
- 541 **Mountain Iceberg.** Similar to New York. Our strain is unexcelled for high altitudes.
- 535 **Imperial 847.** (82 days.) Black seeded. Blight resistant, also resistant to heat; quite sure to head under unfavorable conditions; heads large and sweet; good keeper.
- 536 **Imperial 44.** (82 days.) Sure header, even in hot weather; blight resistant; white seeded; heads medium large, compact, savory leaves.
- 537 **Great Lakes All-American Winner.** (90 days.) It stands heat and sun. A fine summer lettuce. Heads small, extremely solid, with leaves folding completely across; beautiful dark green.

Prices on above heading varieties: Pkt, 5c; oz, 25c; $\frac{1}{4}$ lb., .85c; $\frac{1}{2}$ lb., \$1.65; lb., \$3.20. Postpaid.

- 539 **Improved Hanson.** (Nonpareil). (80 days.) The most reliable variety for general planting; stands hot weather better than any other type. Sure heading.
- 534 **Mammoth Big Boston.** (75 days.) Early and hardy. Big Boston grows to an enormous size, well grown heads measuring from 10 to 12 inches across.
- 540 **May King.** (60 days.) Quickly forms fine hard heads, resembling small cabbages. Hardy, will bear transplanting.
- 529 **Early Curled Simpson.** **Silesia Early Curled.** (60 days.) The old-time curly Lettuce, and still very popular. A quick growing, hardy variety. It forms a tight bunch of leaves.
- 528 **Black Seeded Simpson.** (65 days.) Very tender and of excellent flavor.
- 530 **Early Prize Head.** (75 days.) A home garden favorite. Not a head Lettuce, but makes a large and distinct bunch of leaves at the heart.
- 527 **Wards' Improved Grand Rapids.** (60 days.) Well adapted for early spring planting or for greenhouse forcing. It does not form a head.
- 526 **Chicken Lettuce.** (40 days.) Grows tall and produces lots of green feed. After cutting, stumps will grow up again.

Prices: Pkt, 5c; oz, 20c; $\frac{1}{4}$ lb, 65c; lb, \$2.10. Postpaid.

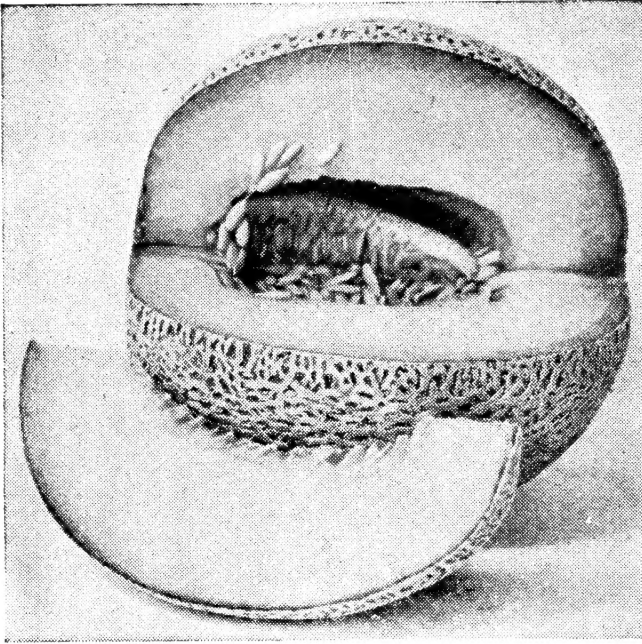
MUSTARD FOR GREENS

Grows in almost any kind of soil. Does best in cool weather; sow early and follow by sowings at ten-day intervals.

- 547 **Giant Southern Curled.** (50 days.) Curly leaved; popular for fall planting.
- 550 **Chinese Broad Leaf.** (55 days.) Leaves very large. Above mustard is priced: Pkt, 5c; oz, 15c; $\frac{1}{4}$ lb, 45c; lb, \$1.35. Postpaid.

MUSKMELONS AND CANTALOUPE

- 397 **H. B. No. 45.** (75 days.) The new Powdery Mildew resistant Melon. True Hale's Best type, rich salmon flesh, small seed cavity, heavily netted, faint stripe. Picked on full slip, will remain in edible condition longer than other varieties.
- 409 **Heart of Gold.** (85 days). Has very thick, sweet flesh, a beautiful golden salmon color. Good size, oval shape, fairly distinct ribs and heavy netting.
- 398 **"H. B."—Hale's Best.** (75 days). A remarkably early shipping variety of excellent quality. Melons are oval in shape, 8 inches long by 4½ inches in diameter with heavy netting.
- 399 **Hale's Best No. 36.** (70 days.) Very prolific; perfectly netted, with a pink flesh showing a slight tinge of red. One of the best varieties in use.
- 402 **Honey Rock or Sugar Rock.** (75 days.) Delicious flavor; nearly round; coarse netting; deep salmon meat.
- 413 **Rocky Ford.** (85 days.) Rust resistant and the finest green-fleshed selection from the Rocky Ford type. Very good home garden melon but will not stand shipping.



- 405 **Honey Dew.** (110 days.) Not a cantaloupe, but more a fall or winter melon. The flesh is emerald green, very thick, melting and fine grain.

Prices on Cantaloupes:

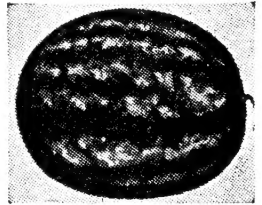
Pkt. _____	5c
Oz. _____	20c
¼ Lb. _____	65c
Lb. _____	\$2.10
Postpaid.	

See Page 12 for a Fine Garden Book.

H. B. No. 45

WATERMELONS

- 752 **Ward's Rio Grande.** (75-80 days.) Our own selection for early, sweet melon. Thin, dark green rind; too tender to ship.
- 758 **Kleckley's Sweet.** (85 days.) Immensely popular. Sweet rich flavor; bright red, solid flesh. Rind too thin for shipping.
- 764 **Tom Watson.** (95 days.) Old, but still a leader. Dark red flesh; deep green rind; thin but tough. About 40 lbs.
- 760 **Striped Klondike.** (80 days.) light green with dark green stripes, very sweet, rind tough. Can be shipped—Excellent home garden melon.
- 763 **Improved Dark Seeded Klondike.** (85 days.) Larger than original Klondike; cylindrical, tapering to blossom end; slightly ribbed; small seeds; ships moderate distances. Bright red flesh, finest quality.
- 751 **New Market Early.** (70 days.) Extra early; recommended for short-season localities. Has dark green skin, mottled with darker stripes. Weight about 20 pounds.
- 767 **Cannonball, White Seeded.** (90 days.) Practically all solid heart. Round, dark green; a beauty and second to none in quality, 25-30 lbs. When picked fully ripe remains in condition longer than other melons.
- 770 **Cannonball Black Seeded.** (90 days.) Bright red, solid heart.
- 765 **Winter Queen.** (95 days.) Round, New Market Early nearly white. Ripen early, but keep two or three months. Bright red flesh. Weight, 15 lbs.



All above Watermelons are priced: Pkt, 5c; oz, 20c; ¼ lb, 50c; lb, \$1.70. Postpaid.

Citron Red Seeded

Citron Red Seeded, for pickles and preserves. Culture same as Watermelon. Prices: Pkt, 5c; oz, 10c; Postpaid.

KOHL-RABI

- 522 **Early White Vienna.** (50 days.) Extremely early, with distinctly small tops; bulbs medium size, very light green or nearly white and of the best quality. Pkt, 5c; ½ oz, 20c; oz, 35c. Postpaid.

ONION SEED—Mountain Grown

Culture. One ounce to 200 feet of drill; 3 to 6 pounds per acre. Soil for Onions should be well drained, rich sandy loam, well fertilized. Sow the seed thinly in drills $\frac{1}{2}$ inch deep and rows 14 inches apart.

554 Mountain Danvers. (95 days.) The earliest and best keeping yellow globe onion. Our Mountain Danvers is a slightly flattened globe. The onions are thin-necked and solid. The skin is a darker color than the Yellow Globe Danvers and the Mountain Danvers mature a month earlier.

573 Yellow Globe Danvers. (125 days.) Similar in color to the Mountain Danvers, true globe-shaped, but a little later.

560 Southport Yellow Globe. (130 days.) A handsome market variety. Medium to large size, true globe shape.



Mt. Sweet Spanish

Above Onions are priced:

Pkt, 5c; oz, 35c;
 $\frac{1}{4}$ lb, \$1.15;
lb, \$3.75.

Postpaid.

569 White Lisbon. For green onions—early, yet slow to form a bulb.

568 Early White Queen. (95 days.) The little round, white onion used for pickling or in chow-chow. Extremely early, firm flesh and mild in flavor.

566 Crystal White Wax. (120 days.) Pure white, early, extremely mild and sweet. Crystal Wax is also grown from plants.

555 White Portugal. (105 days.) Large, flat, white onion, fine grained, excellent for green bunching or pickles, also keeps well in storage.

559 Mountain Sweet Spanish. (120 days.) The finest and best keeping of the Sweet Spanish types. The onions are large globes and yield an enormous crop of fine flavored bulbs. Mountain Sweet Spanish is in a class by itself for shipping or storage. Special Utah strain.

575 White Sweet Spanish, Mountain Grown. This excellent onion has all the good features of the Mountain Sweet Spanish; the pure white skin makes it even more attractive. Matures in about the same period of time. Our experience is that it yields heavier.

Prices: Sweet Spanish, Crystal Wax, Lisbon, White Queen, and Portugal: Pkt, 5c; oz, 45c; $\frac{1}{4}$ lb, \$1.45; lb, \$4.45; postpaid.

LEEK

Improved Carentan

A delicately flavored member of the Onion family, equally useful for flavoring soups or as a salad.

524 (90 days.) An early, hardy variety. Pkt, 5c; oz, 45c.

OKRA or GUMBO

Pods are used when young and tender for soups, stews, etc. Dry for winter use. Culture same as for corn. Ounce sows 75 feet of row. Very popular in South.

552 White Velvet. (70 days.) White pods.

553 Perkins Green Pod. (75 days.) Green pods.

Okra prices: Pkt, 5c; oz, 10c; $\frac{1}{4}$ lb, 35c; lb, \$1.10. Postpaid.

HERBS

506 Dill. Leaves and seed heads are used for flavoring pickles. Pkt, 5c; oz, 15c; $\frac{1}{4}$ lb, 40c. Postpaid.

512 Sage. One of the most useful herbs. Pkt, 5c.

508 Chives. A delicate mild onion flavored seasoning. Pkts, 5c.

ENDIVE

Sow in drills, 1 ounce to about 300 feet. Used in place of lettuce for salads.

- 494 Green Curled Winter. (75 days.) Very tasty.
 495 Broad-Leaved Batavian or Escarolle. (90 days.) Large, broad leaf, easily blanched. Used for soups and salads.
 496 Deep Heart Fringed. New type, full hearts, fine leaves. Blanches to clear, creamy yellow.
Endive prices: Pkt, 5c; oz, 15c; $\frac{1}{4}$ lb, 45c; lb, \$1.45; Postpaid.

EGG PLANT

Culture: One ounce to 1,500 plants, $\frac{1}{4}$ lb. per acre. Start the plants in boxes or hotbed.

- 491 New York Improved. (120 days.) Large fruits and entirely spineless. Oval shape.
 492 Black Beauty. (110 days.) Ten days earlier than New York. Fruits uniform, blocky, oval shape and dark purple color. Plants dwarf. Egg Plant prices: Pkt, 5c; $\frac{1}{2}$ oz, 30c; oz, 50c; $\frac{1}{4}$ lb. \$1.50; lb, \$4.75. Postpaid.

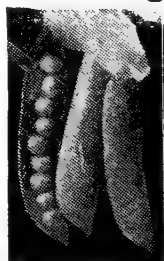
PEANUTS

Plant in rows 3 feet apart, about 10 inches apart in row. Do best in light, sandy loam soil. Cover the roots or new shoots as they appear.

- 645 Tennessee Red. Good yielding sort. Pods long, nuts sweet, frequently 3 to 4 in a pod. Recommended for all but very high altitudes.
 643 Small Spanish. Early maturing; small, round nuts, sweet and delicious. Best for short seasons.
 644—Large Virginia. Heavy producer, large nuts.
Peanuts priced: $\frac{1}{2}$ lb, 25c; lb, 45c; 5 lbs, \$1.90. Postpaid.

GARDEN PEAS

- 585 Alaska. (55 days.) The earliest of all garden Peas. Light green vines, $2\frac{1}{2}$ feet high. Pods $2\frac{1}{2}$ inches long.
 590 American Wonder. (55 days.) One of the earliest wrinkled varieties. Vines only grow about 10 inches high. Pods about 3 inches long, 7 to 8 sweet, fine flavored peas. Very prolific.
 589 Little Marvel. (60 days.) Remains in prime picking condition a week longer than any other. Vines 18 inches high. Pods 3 inches long.
 587 Mile High Supreme. (55 days.) The largest early wrinkled Pea. It is a dwarf variety, vines 14 to 16 inches high, pods 4 to $4\frac{1}{2}$ inches long containing 7 to 9 large Peas of excellent flavor. A fine early canning Pea as it produces a large percentage of its crop at one picking.
 597 Laxton's Progress. (58 days.) The earliest and heaviest yielder. Large pods and large Peas, very good flavor, dwarf vine.
 598 Ward's Bestever. (60 days.) The best variety of the Gradus type. Sturdy vines growing 2 feet high. Pods 4 inches long.
 592 Laxtonian or Blue Bantam. (60 days.) Deep green pods $3\frac{3}{4}$ inches long. Vine grows $1\frac{1}{2}$ feet high.
 593 Thomas Laxton. (60 days.) A selection from Gradus.
 591 Gradus or Prosperity. (60 days.) This fine variety combines earliness with large size.
 608 Dwarf Telephone. (75 days.) A dwarf strain of the popular Telephone.
 607 Improved Stratagem. (79 days.) A superior late variety for home and market garden.
 600 Dwarf Giant Pod. (75 days.) Resembles Stratagem, but 4 to 5 days earlier, unequaled in pod size, and exceptional in quality. Pods green, plump, curved at tip; contains 8 to 10 large, succulent peas.
 601 Alderman. (78 days.) Pods contain 9 extra large, medium green peas of finest quality. Tall vines.
 602 Bliss Everbearing. (70 days.) Exceedingly productive and continues to bear for a long season.
Above priced: Pkt, 5c; $\frac{1}{4}$ lb, 10c; $\frac{1}{2}$ lb, 20c; lb, 35c; 10 lbs, \$2.40. Postpaid.



Mile High

PARSNIPS

- 584 Ideal Marrowfat. (100 days.) The sweetest and richest flavor.
 583 Hollow Crown. (110 days.) Longer than Marrowfat; about 15 inches long. A good keeper.
Pkt, 5c; oz, 15c; $\frac{1}{4}$ lb, 40c; lb. \$1.35. Postpaid.

PEPPERS

One ounce to about 1,500 plants. Start in housebox or hot-bed. Plant hot varieties well apart from sweet varieties to prevent mixing.

- 624 **Sunnybrook Pimento.** (110 days.) Flattened apple shape, very mild and sweet. Sturdy vines, producing through a long season.
- 626 **Ruby King.** (120 days.) Vigorous, bushy plants growing 2 feet high. Peppers 5 to 6 inches long and 3 inches across.
- 618 **Bell or Bullnose.** (100 days.) Peppers 2 inches across and 3 inches long. Occasionally hot-fruited.
- 627 **Ruby Giant.** (130 days.) Similar to Ruby King but larger and broader at blossom end. An excellent shipper.
- 619 **Early Mountain.** (100 days.) Always sweet and extremely early. Heart-shaped.
- 625 **Mile High Sweet Giant.** (125 days.) Very large and thick-meated for stuffing or baking. Fine, sweet flavor.
- 617 **California Wonder.** (130 days.) Large, blocky, smooth and thick-meated, sweet and delicious.
- 622 **Chinese Giant.** (135 days.) Largest of the sweet peppers, 4-5 inches each way.
- Above Peppers: Pkt, 5c; $\frac{1}{2}$ oz, 30c; oz, 55c; $\frac{1}{4}$ lb, \$1.60. Postpaid.



Mile High

HOT PEPPERS

- 621 **Long Red Cayenne.** (120 days.) Red hot. Slim pods 5 inches long.
- 623 **Large Mexican Chili.** (120 days.) Large thick-meated; dark red pods. For making chili.
- 620 **Mile High Pickler.** (92 days.) A fine hot pickling pepper. Orange-Scarlet color, extremely hot, $1\frac{1}{2}$ in. long, $\frac{3}{8}$ in. thick.
- Hot Peppers are priced: Pkt, 5c; $\frac{1}{2}$ oz, 35c. Postpaid.

PUMPKIN

3 lbs. per acre, or 1 lb. with corn.

- 634 **Small Sugar or Boston Pie.** (70 days.) Early, round, deep orange yellow; weight approximately 4 lbs. Unexcelled quality. Cooks dry and mealy, a fine Pumpkin for pies or canning. Very prolific.
- 640 **Connecticut Field or Big Tom.** (85 days.) The common variety raised for stock feed. Also used for canning. Very prolific and fruits average 15 inches in diameter.
- 637 **King of the Mammoths.** (100 days.) Large cornfield variety; produces a heavy tonnage. Flesh thick but rather coarse.
- Above Pumpkin priced: Pkt, 5c; oz, 10c; $\frac{1}{4}$ lb, 40c; lb, \$1.20.



Small Sugar

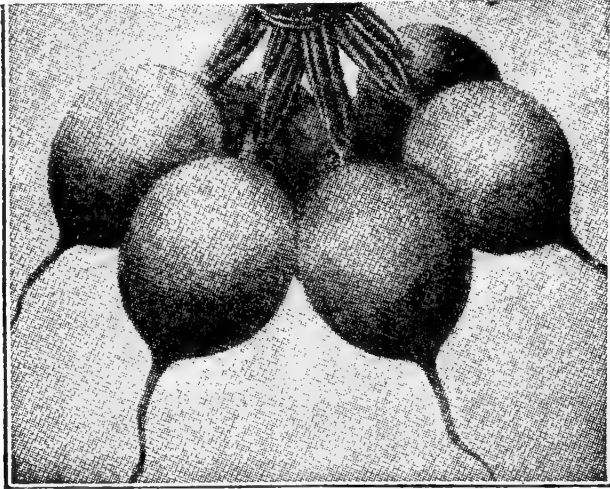
SPINACH

- 683 **Bloomsdale.** (40 days.) Early and extra hardy; excellent for fall or real early spring. Crumpled leaf, short stalks.
- 679 **Mountain Evergreen.** (50 days.) Remains tender and in excellent market condition after all other early varieties. Medium sized round leaves, crumpled in center. Intense dark green.
- 684 **King of Denmark.** (45 days.) Produces a thick, round clump of crumpled leaves, dark green, tender and delicious. Stands a long time without seeding.
- 677 **Long Standing Bloomsdale.** (40 days.) Stands two weeks longer than Bloomsdale before going to seed.
- 682 **Giant Nobel Thick Leaf.** (45 days.) Smooth leaved and therefore good for canning, as it washes clean easily. Slow to seed.
- 680 **Large Viroflay.** (65 days.) Desirable for canning, as it has very large, smooth leaves, quite pointed at tip.
- 681 **Flanders Broad Leaf.** (55 days.) Similar to Viroflay, but with rounded bottom edges.
- Prices on above Spinach: Pkt, 5c; oz, 10c; $\frac{1}{4}$ lb, 30c; lb, 85c; postpaid.

- 678 **New Zealand.** (60 days.) Distinct everbearing tall type, bearing a fine crop even in hot weather. Can be cut again and again. Soak seed in tepid water 12 hours before planting. Pkt, 5c; oz, 20c; $\frac{1}{4}$ lb, 65c. Postpaid.

PARSLEY

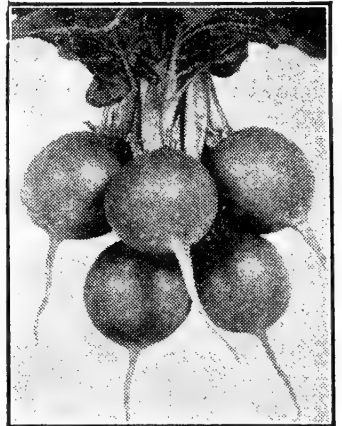
- 579 **Champion Moss Curled.** Well curled. Best for garnishing.
 582 **Plain or Italian.** Flat and uncurled. Best for flavoring.
 Pkt, 5c; oz, 10c; $\frac{1}{4}$ lb, 30c. Postpaid.



Vick's Scarlet Globe Radish

with white tip; small but uniform; nice appearing.

- 648 **Early Scarlet Turnip.** (21 days.) Excellent quality round, red radish, with crisp, tender flesh.
 650 **Early Scarlet Turnip White Tip.** (21 days.) Similar to the Early Scarlet Turnip but has white tip. Select strain.
 651 **French Breakfast.** (22 days.) Rose scarlet with white tip. Olive shape, nearly 2 inches long.
 658 **Improved White Icicle.** (28 days.) One of the best sellers; 6 inches long, pure white skin and flesh, snappy as an icicle. Very attractive bunched for market; mild flavored.
 657 **Long Scarlet Short Top.** (32 days.) About 6 inches long, straight and smooth. Most popular long red radish.



Crimson Giant

- 653 **Crimson Giant.** (32 days.) Crimson Giant is similar to Scarlet Globe, but much larger, remains in edible condition still longer.
 654 **Mixed Radish.** If you are short of space, use mixed seed. Four standard varieties—long red, long white, round red and white tip. All good standard varieties.
 Radishes: Pkt, 5c; oz, 10c; $\frac{1}{4}$ lb, 30c; lb, 90c. Postpaid.

Late Maturing and Winter Radishes

Much larger; winter radishes store much like other vegetables.

- 662 **White Strassburg.** (40 days.) An excellent white radish. Larger than icicle and retains its crispness in hot weather.
 668 **China Rose Winter.** (60 days.) Rose-color skin, white flesh. Solid and free from strings.
 669 **White Chinese Winter.** (65 days.) Smooth, white skin.
 671 **Round Black Spanish.** (72 days.) White flesh, black skin. The best keeper of all the winter radishes.
 Radishes: Pkt, 5c; oz, 10c; $\frac{1}{4}$ lb, 30c; lb, 90c. Postpaid.

PIE PLANT or RHUBARB

Comes on early in the spring when other fruit and vegetables are scarce.

Thick Red Stalks. Excellent quality.

- 673 **Mammoth.** Large; fine flavor. Pkt, 5c; oz, 25c; postpaid.

COLLARDS

- 436 **True Georgia.** Withstands heat; vigorous; delicious greens.
 Pkts, 5c; oz, 15c; $\frac{1}{4}$ lb, 50c. Postpaid.

SALSIFY OR OYSTER PLANT

Used in soups or may be fried.

Price: Pkt, 5c; oz, 20c; $\frac{1}{4}$ lb, 60c. Postpaid.

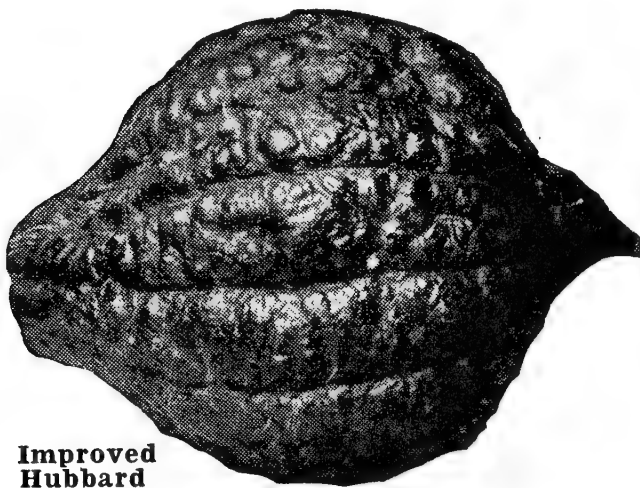
SUMMER SQUASH

- Ounce to 15-40 hills, varying with seed; 3-4 lbs. per acre.
- 686 **White Bush Scallop, Patty Pan.** (45 days.) Flat and scalloped. White skin and light green flesh. Bush plants.
- 688 **Yellow Summer Crookneck.** (50 days.) Warty, orange-colored skin and flesh; crooked-over neck; bush type vine.
- 704 **Yellow Straightneck.** (55 days.) Entirely straight.
- 694 **Giant Summer Crooknecks.** (58 days.) Larger and more warty than Yellow Summer Crooknecks, later maturing.
- 703 **Black Zucchini.** (60 days.) Italian vegetable, usable from the time it is three or four days old, when it is commonly creamed like asparagus. Green-black fruits.
- Summer Squash prices: Pkt, 5c; oz, 15c; $\frac{1}{4}$ lb, 45c; lb, \$1.35. Postpaid.

WINTER SQUASH

- 691 **Improved Hubbard.** (90 days.) Deep green; one of the best keepers. Fine grained, thick flesh.
- 690 **Delicious.** (85 days.) Heart shaped small Hubbard, about 7 lbs. Of the very best quality.
- 687 **Banana.** (90 days.) As its name implies, long and slender. Skin greenish gray; thick, rich flavor meat.
- Winter Squash prices: Pkt, 5c; oz, 15c; $\frac{1}{4}$ lb, 65c; lb, \$2.10. Postpaid.

Small Table Squash



Improved Hubbard

- 698 **Ward's Individual.** (60 days.)
Regret we can not supply seed for this squash this season.

- 705 **Table Queen.** (70 days.) Deeply creased, heart shape.

This squash keeps well in storage; a fine flavored small table squash for baking.

- 697 **Golden Table Queen.** (75 days.) Developed from Table Queen. A little larger, golden yellow, thick meat, fine when baked, stores well for winter use. Can also be fried when green and tender.
- Prices Small Table Squash: Pkt, 5c; oz, 15c; $\frac{1}{4}$ lb, 60c; lb, \$1.90. Postpaid.

TURNIPS

- Ounce to about 150 ft. of row. Sow spring or fall.
- 734 **Early Flat Dutch.** (55 days.) Medium sized; flat. Mild.
- 738 **Extra Early Purple Top Milan.** (50 days.) Flat; fine quality.
- 740 **Purple Top Strap Leaf.** (65 days.) White and a good keeper. Used for table when young, or for stock.
- 735 **Purple Top White Globe.** (70 days.) Handsome, good quality general crop turnip. Nearly round, white with purple top.
- 733 **Early Snowball.** (55 days.) Early small round white.
- 743 **Golden Ball.** (59 days.) Nearly round, very tender and sweet, grows to large size, well adapted for spring or fall planting.
- Turnip prices: Pkt, 5c; oz, 10c; $\frac{1}{4}$ lb, 30c; lb, 85c. Postpaid.

RUTABAGAS

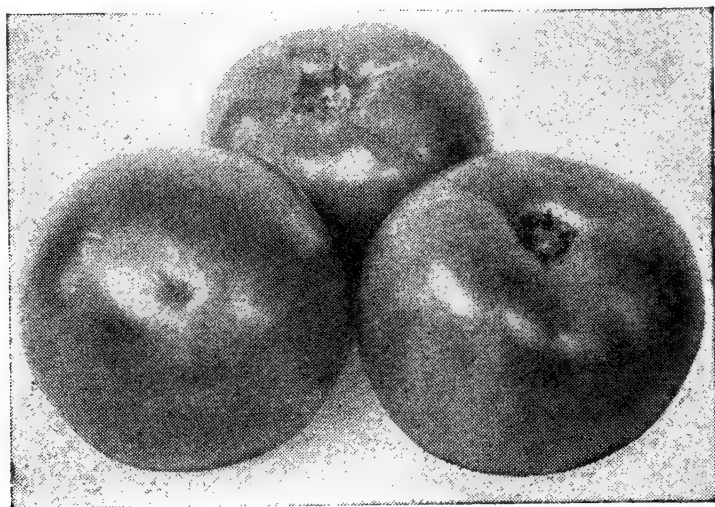
- 748 **Improved American Purple Top.** (95 days.) A hardy productive variety; roots are large, with a very small tap root. Color bright yellow with a purple top.
- Pkt, 5c; oz, 10c; $\frac{1}{4}$ lb, 30c; lb, 85c. Postpaid.



BAIT-M For the control of cut worms, sow bugs, and slugs that eat off tender seedlings as they come through the ground.
1 Lb. Package, 35c. 4 Lb. Package, \$1. Postpaid
ORDER WHEN ORDERING SEED AND HAVE IT ON HAND.

TOMATOES

- 715 June Pink.** (65 days.) A pink Earliana, very popular as a shipper. Vine open and fairly small.
- 710 Bonny Best.** (75 days.) Splendid second-early; medium size red.
- 727 Rutgers.** (70 days.) Similar to Marglobe. Desirable for market gardeners, for canning or for juice. Ripens from inside out. Wilt resistant.
- 725 Delicious.** (70 days.) For sheer flavor, fresh or canned; plant a few Delicious. Deliciously mild and sweet; too tender for shipping, but very meaty. Medium to large pink fruits.
- 728 Oxhart.** (80 days.) Late heart-shaped pink; sweet, mild and very meaty. Not heavy yielder, but often weighs 2 to 3 pounds.
- 713 Earliana.** (65 days.) Very popular, early, smooth, bright red, of good size. Excellent for early markets.
- 708 Pritchard. Colorado Select.** (70 days.) First-quality, second-early red; wilt resistant. Medium size, round, smooth and solid; excellent flavor. Excellent shipper; picked white or pink, it ripens to a beautiful red.



Smooth Jumbo

- 720 Selected Marglobe.** (80 days.) Rust and wilt resisting; good red globe; small seed cavities, firm flesh. Good shipper and canner. One of the heaviest mid-season yielders.
- 719 Special Strain John Baer.** (75 days.) Vine selected seed. Above Tomatoes are Priced: Pkt, 5c; ½ oz, 35c; oz, 65c; ¼ lb, \$1.85; 1b, \$5.65. Postpaid.

721 Grouthen's Globe.
(75 days.) Improvement over Break O'Day, similarly disease-resistant, better red color, vines protect fruit better. Interior ripens slowly; well adapted to green-wrap shipping. Heavily productive.

- 724 Ruby Gem.** (60 days.) The earliest of all, medium size, prolific, grows in clusters, a beautiful red tomato. The very best for a high altitude short season.
- 726 Bison.** (60 days.) Vine and growing habits much the same as Ruby Gem, cold resistant.
- 730 Yellow Pear.** (80 days.) Yellow, pear shaped; for pickles or preserving.
- 717 Ponderosa.** (85 days.) Large, solid, purplish-pink fruits.
- 712 A new Ward's Jumbo.** (80 days.) A bright red beefsteak type tomato which is exceptionally meaty yet has juice enough for canning. Very non-acid but has a good tomato flavor. People unable to eat ordinary tomatoes on account of acid can eat Ward's Jumbo. A heavy producer.
- 718 Pearson.** (75 days.) Developed at the California Agriculture College. An excellent red canning or shipping variety.
- 716 San Marzano.** (80 days.) A small, long, deep red, thick meaty, mild flavored variety; fine for soup.
- 722 Stokesdale.** (75 days.) Average weight 6 ozs. One of the best green wrap, and canning tomatoes. Average vine growth and a good yielder of fine flavored solid fruit. Excellent for home canning and general home use.
- Price—This Group: Pkts, 5c; ½ oz, 60c. Postpaid.

- 790 Wonderberry.** A wonderful, prolific plant of the tomato family. Very hardy; when once established the bushes will come up each year from odd seeds dropped on the ground. When ripe the berries are almost an inch in diameter, of shining black color. Fruit is non-edible until fully ripe, but when ripe is wonderful for pies, preserves and jam. A very heavy yielder, the plants being loaded with these berries. Requires no special care or cultivation.
- Pkt, 10c; ½ oz, 25c; oz, 40c. Postpaid.

ONION SETS Bottom onion sets, well cured, solid carefully sorted and true to type.

	Qt. or Lb.	4 Lbs.
Yellow Mountain Danvers	30c	\$1.00
White Globe	35c	1.20

Above prices are postpaid. For larger quantities, see back of order blank.

ONION PLANTS Superior quality, hardy, high altitude, outdoor grown onion plants. Shipped direct from the field about March 15th to May 1st.

Crystal Wax. 35c per 100; 85c per 300; \$2.30 per 1000, postpaid.
 Mountain Sweet Spanish. 35c per 100; 85c per 300; \$2.30 per 1000, postpaid. For larger quantities, write us for prices.

MARY WASHINGTON ASPARAGUS ROOTS

The extra large, rust resisting variety. Two-year old roots, shipped fresh from the field. 50c per dozen; 50 for \$1.10; 100 for \$1.95, postpaid. Not prepaid, \$15.00 for 1000.

RHUBARB ROOTS

Strawberry Rhubarb. Finest, sweetest flavored of all, Red skinned. Good sized roots, with live sprouts. 3 for 55c; \$1.55 per dozen, postpaid.

VEGETABLE PLANTS

Mountain Grown, Transplanted Plants, Sturdy and Hardy. We Guarantee Delivery of Plants to the Second Zone Only, and do not recommend the shipping of plants beyond the third zone, excepting onion plants. When convenient, express is often better than parcel post for large quantities. Include your plants with your seed order; and specify date you wish plants shipped. We will try to have them reach you on that date.

We do not ship plants C. O. D. Please do not ask it.

	Postpaid			Not
	Doz.	50	100	P'paid 1000
CABBAGE, Early. Ready April 1st to May 19th. Copenhagen Market Earliest of All, Early Jersey Wakefield, Golden Acre, Glory of Enkhuizen, Stein's Early Flat Dutch	\$.30	\$.95	\$ 1.75	11.50
CABBAGE, Late. Ready May 20 to July 15th. Copenhagen Market, Danish ballhead, Hollander Mountain ballhead,	.25	.70	1.20	6.90
CAULIFLOWER, Early. Ready April 1st to May 19th. Special High Altitude Danish Snowball, Dry Weather	.35	1.20	1.95	15.00
CAULIFLOWER, Late. Ready May 20th to July 15th. Special High Altitude Danish Snowball, Dry Weather	.30	.75	1.30	7.50
CELERY, Early. Ready April 15th to June 14th. Golden Plume. Golden Self Blanching	.30	.85	1.70	11.50
CELERY, Late. Ready June 15th to July 15th. Giant Colorado Pascal, Utah or Golden Crisp and Crystal White Utah Strain	.25	.75	1.20	6.90
EGGPLANT. Ready May 1st to June 15th. Black Beauty, New York	.35	1.00	1.80	12.50
PEPPER. Ready May 1st to June 15th. California Wonder, Chinese Giant, Early Mountain, Mile High Sweet Giant, Ruby Giant, Worldbeater, Sunnysbrook, Cayenne, Mexican Chili, Small Red Chili	.35	1.00	1.80	12.50
TOMATO. Ready April 15th to July 1st. Ruby Gem, Delicious. Bonny Best, Earliana, Grothen's, Marglobe, Oxheart, John Baer, June Pink, Pritchard, Rutgers, Wards Smooth Jumbo, Yellow Pear, Pearson-Stokesdale-Bison	.35	1.20	1.95	15.00
SWEET POTATO. Ready May 1st to July 1st. Big Stem Jersey, Yellow Jersey, Nancy Hall, Yellow Nansemond	.35	1.00	1.80	12.50

USE TRANSPLANTONE FOR ALL ABOVE PLANTS

When transplanting plant roots are often damaged, Transplantone rebuilds this damage, helps replace moisture, helps overcome a setback in transplanting. Starts plants off with a Bang!

1/2 Ounce Treats	500 Plants	\$.25	} All Postpaid
3 Ounces Treats	3,000 Plants	1.00	
1 Pound Treats	16,000 Plants	4.00	

IOWEALTH

KING OF ALL HYBRIDS

You Get ALL THIS

When You Plant IOWEALTH

- **Corn you can feed.** Iowealth is ONE hybrid that's bred for kernels with the soft, floury starch. Not a hard, flinty hybrid in the entire Iowealth series.
- **Good yield.** Official yield test records almost always show Iowealth at the top of the list.
- **Drouth Resistance—Wind Resistance.** Straight, strong stalks, together with roots that sink down eight feet, make Iowealth one of the most drouth and wind resistant of all hybrids.
- **Easy Picking, by hand or machine.** That means less labor costs, less time in the field.
- **Disease Resistance—Gives you better grading, more profitable corn.**

We stock four maturities of Iowealth Hybrid. S matures in about 90 days; A in about 100 days; AQ in 105 to 110 days; and No. 25 in 120 days. It is important to fit the maturity to your season as near as possible. The later maturing the deeper the kernel and heavier yield. When ordering use these Symbols. S—A—AQ—and No. 25.

2 Pounds	-----	\$0.50	} By mail postpaid
5 Pounds	-----	1.05	
10 Pounds	-----	1.85	

56 Lb. Bushel—AQ and No. 25. Not prepaid, \$9.25 per bushel.

56 Lb. Bushel—A and S. Not prepaid, \$9.50 per bushel.

F. O. B. Grand Junction.

WESTERN COLORADO GROWN "MILE HIGH" HARDY STRAIN ALFALFA SEED

LADAK. A wilt-resistant variety, is slow to start in the spring, but it resists drought and produces a good yield of hay. Leafy and of high feeding value, and will hold a stand longer than other varieties.

COMMON. Deep-rooted. Excellent for hay; but must have a deep soil. Therefore, if you do not have over two and a half feet of good soil to water, shale, or gravel, we suggest that you use Grimm.

GRIMM. Has a spreading root and lives from surface soil. Will withstand severe freezing; does not winter kill; better adapted to extreme northern and high altitude growing.

MEEKER BALTIC. A distinct variety; same root system as the Grimm. Originated at Meeker, Colorado, on dry land. See Yellow Price Sheet for prices.

STRAWBERRY CLOVER

Western Colorado grown seed. It thrives on wet, seepy soil, even though it is crusted with alkali. Best suited for pasture; spreads from root and seed—a perennial plant. Requires 3 lbs. of seed per acre. For best results, sow in rows with garden seed planter. See Yellow Price Sheet for prices.

CLOVER

- MEDIUM RED**—A biennial plant growing 16 to 18 inches high; fine for hay and pasture; one of the best producers of nitrogen.
- MAMMOTH RED**—A biennial larger and coarser than Medium Red; a better soil builder and also a good hay.
- HUBAM SWEET CLOVER**—An annual rapid growth, coarse and fibery; develops rapidly and produces seed the first year; for soil building or cover crop.
- YELLOW BLOSSOM SWEET CLOVER**—A biennial for hay and pasture; also a very good cover crop and soil builder.
- WHITE BLOSSOM SWEET CLOVER**—A biennial coarser than Yellow Blossom; a good cover crop; not as good for hay or pasture.

GRASS SEEDS

- REED CANARY GRASS**—Is one perennial grass that will thrive in marshy places, stands under water for weeks without injury, yields enormous tonnage of hay with feed value equal to wheat bran. Sow any time before June 20th at the rate of 10 to 12 pounds per acre, broadcast. It forms a sod rapidly through the spreading of underground roots. Makes your lowlands grow profitable crops.
- CRESTED WHEAT GRASS (Standard or Forage Strain)**—Is a drought-resistant, long-lived grass.
- CRESTED WHEAT GRASS (Fairway Strain)**—Shorter than Standard, often used for golf fairways and parks where water is short.
- MOUNTAIN BROME GRASS**—Adapted to a wide range of soil and climate, makes a strong growing perennial bunch grass, drought resistant, makes a fine pasture and leafy hay. Much better for high altitude than Smooth Brome.
- PERENNIAL RYE GRASS**—A very valuable variety for permanent pasture. Succeeds well on almost any soil, but is particularly adapted to moderately moist or irrigated lands. Sow 30 to 40 pounds per acre in spring.
- BROME GRASS (Bromus Inermis)**—Yields enormous crops of splendid hay, and affords early and abundant pasture.
- MEADOW FESCUE, or ENGLISH BLUE GRASS**—Of great value for permanent pasture and for hay. Does best on strong land.
- PERMANENT PASTURE MIXTURE**—We highly recommend the following ratio for a well balanced permanent pasture mixture: 30% Orchard Grass, 30% Erome Grass, 20% Perennial Rye Grass, 12% Timothy and 8% Yellow Blossom Sweet Clover. Sow 25 to 30 pounds per acre. Sow broadcast, cover lightly and keep wet until well started.
- ORCHARD GRASS**—Often sown with Alfalfa to give a stronger and better hay. It will stand drought or will do well in the shade. Orchard Grass gives a heavy tonnage in permanent pasture, furnishes the first green bite in the Spring and the last in the Fall.
- SUDAN GRASS**—One of the best catch crops to plant when late seeding is necessary. Can be cut every six weeks until frost. Frost kills it entirely. A real drought resister, renewing its growth immediately when rain comes. An enormous hay yielder and the hay can be fed in unlimited quantities without any danger to stock.

See yellow price sheet for prices on all the above seeds, also for a complete list of all field seeds including Seed Wheat, Oats, Barley, Rye and Corn. Field Peas, Soy Beans, Kaffir Corn and all Sorghums.

Regret that space will not permit descriptions on all these items, however, you will find our stock complete.

Quality is protected on all these seeds by the MILE HIGH Brand. Perhaps you are familiar with our High Altitude Grown Seeds and know the results that can be expected from them.



CYCLONE SEED SOWER

The finest hand seeder known. Throws seed directly and evenly on the land. Can be set to sow any amount desired. Sows alfalfa, clover, grass or small grains very satisfactorily. Price each, \$2.75, postpaid.

Prices on Hotkaps and Hotents Are Not Prepaid Except as Noted



Germaco
Hotkaps

New Method of Plant Protection

An individual hot-house for each plant; cost less than 1c per plant. One man can set 2000 to 3000 per day. Get your crop to market 20 days earlier. Hotkaps protect your

young plants from sun, wind, frost and insects.

Prices: 50 for 85c; 100 for \$1.75; 250 for \$3.30; 500 for \$5.95; 1000 for \$10.25; not prepaid. Shipping wt. 28 lbs. per 1000.

Package of 25 Hotkaps and Setter	50c	} Postpaid
Package of 100 Hotkaps and Setter	\$1.95	
Package of 250 Hotkaps and Setter	3.50	

HOTKAP SETTERS

Fiber Setters ----- 25c. Steel Setters ----- \$1.50. Postpaid

HOTENTS

LARGER, STRONGER, REINFORCED

Add Postage for Hotents.

Packed 500 to Pkg. Shipping weight, 35 lbs.

50 for \$1.15; 100 for \$2.00; 250 for \$4.50; 500 for \$7.50. 1000 for \$14.75. HOTENT STEEL SETTER, \$1.50 ea., not prepaid.

WINDOW MATERIALS

LET THROUGH ULTRA VIOLET LIGHT

THE SUNSHINE VITAMIN "D" RAYS

Keep In Heat — Hold Out Cold — Better Than Glass
All Material Full 36 Inches Wide.



WINDOW FABRIC	FLEX-O GLASS	WYR-O GLASS
80 Threads Per Square Inch Base	124 Threads Per Square Inch Base	¼-In. Wire Cover'd Plastic Glass on Both Sides
1 Yard ----- \$.35	\$.45	\$.85
3 Yds. ----- .90	1.15	2.15
5 Yds. ----- 1.50	1.80	3.90
10 Yds. ----- 2.80	3.50	7.50
25 Yds. ----- 6.25	8.75	18.75
50 Yds. ----- 12.50		



NITRAGIN INOCULATION

It is very important to inoculate with Nitragin when planting on soil where the crop has not been previously produced. Results are proven. When ordering, state name of seed to be treated.

Alfalfa—Sweet Clover.	Price
Size 1 bu. ea.	\$.50
2½ bu. ea.	1.00

ALL BEANS

1 bu. ea.	\$.35
Alsike and Red Clover	
1 Bu. ea.	\$.50
2½ Bu. ea.	1.00

GARDEN SIZE
Garden Peas, Sweet Peas and Beans
Enough for 6 lb. seed, Retail price, ea. 10c.

Nitrogen for other crops is available. Specify crop.

All Prices Postpaid.



I figure it more than pays for itself.



Give **KOW KARE**
THE Iron AND Iodine CONDITIONER

1¼ Lb. Can	-----	\$.70
2¾ Lb. Can	-----	1.35

Postpaid.

Weed-No-More

The Magic 2, 4-D

Weed Killer!

WEED-NO-MORE IS A LIQUID HORMONE TYPE WEED KILLER CONTAINING 2, 4-D (DICHLOROPHENOXY-ACETIC ACID) and is very effective in eradicating not just one but many common weed pests. Weed-No-More spells D-E-A-T-H to a long list of plant enemies, including bindweed, plantain, willow, Russian knapweed, dandelion, common milkweed and thistle. Diluted in water and applied as a spray to the plant, Weed-No-More is absorbed through the leaves and kills the root cells by destruction of plant starch and sugar.

Weed-No-More



- Destroys weeds—roots and all!
- Will not injure the soil!
- Is not poisonous to humans or animals!
- Will not harm common lawn grasses!



WEED-NO-MORE "14" containing 14% 2, 4D (Dichlorophenoxyacetic Acid) is used at the rate of 2 tablespoons per gallon of water. This quantity will treat about 200 square feet of lawn, killing such lawn weeds as dandelion, plantain, chickweed and other flat round leaf plants.

8 oz. cans, each \$1.00
 32 oz. cans, each \$2.98
 (Postpaid)

WEED-NO-MORE "40" (containing 40% 2,4-Dichlorophenoxyacetic Acid). A more concentrated product than the 14%, Weed-No-More "40" is ideally suited for spraying large farm acreages. Each quart makes 100 gallons of finished spray.

WRITE FOR FURTHER INFORMATION AND PRICES ON WEED-NO-MORE IN ALL SIZES AND STRENGTHS

Use of Weed-No-More depends on proper application with suitable equipment.

We feature the Hudson Line of Sprayers and Dusters.

MILE HIGH SEED COMPANY

Is Headquarters for

DDT!

WE CAN HELP YOU SOLVE YOUR INSECT PROBLEM

WHETHER IT BE THE CONTROL OF HOUSEHOLD INSECTS, LIVESTOCK PESTS OR AGRICULTURAL INSECTS. DDT IS TRULY THE WONDER INSECTICIDE OF THE AGE. WE ARE WELL INFORMED ON DDT IN ITS VARIOUS FORMS AND FOR ITS MANY USES. WE HAVE JUST THE DDT FORMULATION YOU NEED.

RIDSECT FLY SPRAY WITH 5% DDT—Ridsect contains, besides DDT, a powerful product, Lethane, for quick insect knockdown. This makes a perfect combination—Lethane knocks 'em down—DDT keeps 'em down! Ridsect is also sprayed on walls and other surfaces for residual control of flies and mosquitoes. It waits for insects—kills them when they come.

16 oz., each ----- 55s Postpaid
 32 oz., each ----- 95c Postpaid
 Gallon, each ----- \$2.50 (Not Postpaid)

STERLING ROACH POWDER WITH 10% DDT—Excellent as a control for animal and human lice, fleas, bedbugs, ticks and silverfish, as well as cockroaches. Best applied with a hand dust gun. Complete instructions in every package.

10 oz. Can, each ----- 60c Postpaid

DDT 50% WETTABLE POWDER—To be mixed with water and used as a spray on fruits, vegetables, and other crops against such insects as: Codling moth on apples and pears, cabbage worm, flea beetle, leaf hopper, psyllid lygus bug, leaf rollers, thrips, etc. Widely used as an animal spray or dip for ticks, lice, stable flies and hornflies. Also used as a residual spray for the control of flies, mosquitoes and certain other insects in barns, dairies, canneries and commercial institutions, on manure piles and other places frequented by these insects.

1 lb. Carton, \$1.00—3-lb. Bag, \$2.60, Postpaid

PESTROY 25% DDT CONCENTRATE LIQUID—Pestroy is diluted at the rate of 1 gallon to 4 gallons of water, making 5 gallons of full 5% strength DDT. Pestroy is sprayed or brushed on surfaces on which insects rest. For the residual control of flies, mosquitoes, gnats, fleas, roaches and many other insects.

PESTROY:

- IS SAFE—Non-inflammable when diluted with water!
- IS EASY TO APPLY—Simply spray or brush on!
- IS LONG LASTING!
- IS EASILY MIXED WITH WATER!
- IS ODORLESS!

Quarts, \$1.49—Gallons, \$4.95—Postpaid.

WRITE FOR FURTHER INFORMATION, PRICES AND SIZES ON ABOVE ITEMS!

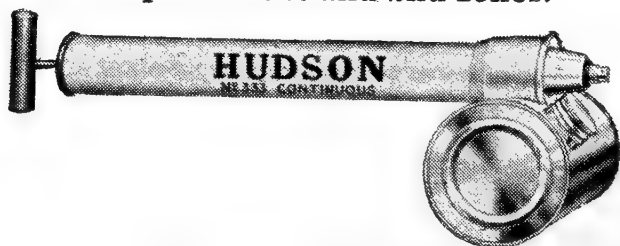
A GOOD SPRAYER IS AS IMPORTANT AS A GOOD SPRAY



A full 3½-gallon sprayer; tested to 110 lbs. pressure. Large capacity and high pressure adapt it for all work. Shipping weight, 10 lbs.

Price \$6.40

Postpaid in 1st and 2nd zones.



SMALL SPRAYERS

Quart Continuous Sprayer; tin \$1.00
 Quart Single Action; tin ----- .65

Postpaid.

Agricultural Dusts!



Come to Us With Your Dusting Problems. We'll Be Glad to Help You Pick the Sterling Dust Needed to Do the Job Right!

BUY STERLING DUSTS WITH CONFIDENCE!

(All Prices F. O. B. Grand Junction, Except as Noted.)



STERLING 5D DUST—Contains 5% DDT. Very effective in controlling Lygus or Tarnished Plant Bug in peaches, alfalfa and vegetable crops. Also recommended for Flea Beetle on all crops, Bean Cutworm on Pinto beans, Thrip on Onions, and for many other insect pests including Ants, Blister Beetles, Cabbage Worms, Leafhoppers and Leafrollers. **50 lb. bags, \$5.50.**

STERLING 5DS DUST—Contains 5% DDT and 80% dusting sulphur. Especially recommended for use on potatoes to control Psyllid and Flea Beetle. **50 lb. bags, \$6.50.**

STERLING DUST #50—Contains Calcium Arsenate and Dusting Sulphur. For control of Alfalfa Weevil. **50 lb. bags, \$5.00.**

STERLING DUST #55—Contains Basic Copper Arsenate and Dusting Sulphur. For control of Flea Beetle, Blister Beetle, Psyllid and Blight on potatoes, as well as Tomato Fruit Worm, Hornworm and Russet Mite on tomatoes. **50 lb. bags, \$6.50.**

STERLING DUST #66—Contains Basic Copper Arsenate 25%. For use in control of Mexican Bean Beetle. **50 lb. bags, \$6.00.**

STERLING DUST #78—Contains Dusting Sulphur 40%, Basic Copper Arsenate 25%, Black Leaf "10" 20%. All purpose dust for tomatoes. **50 lb. bags, \$9.50.**

Above Items F. O. B. Grand Junction.

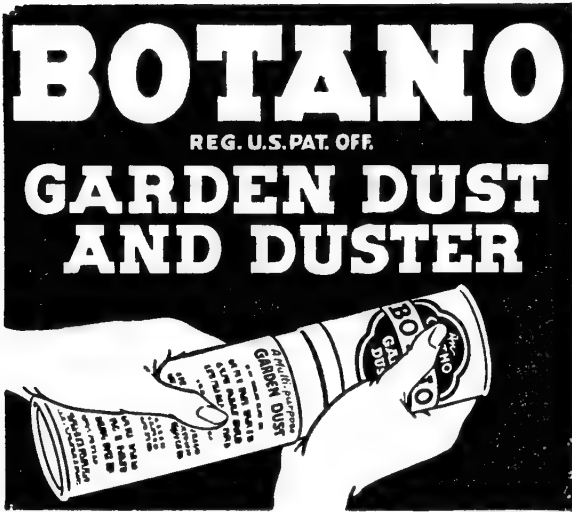
STERLING MULTI-GARDEN DUST—Triple-acting insecticide and fungicide. For control of Ants, Fleas, Beetles, Aphis, Caterpillars and other insect pests, as well as certain fungous diseases. **50 lb. bags, \$8.50, not prepaid; (5 lb., \$1.35; 1 lb., 45c, postpaid).**

STERLING DUST #11—Contains 2% Nicotine. For use on field and vegetable crops where a contact insecticide is required. Especially recommended for Aphis control on cabbage and cauliflower.

50 lb. bags, \$6.00, not prepaid; (5 lb., \$1.25; 1 lb., 40c, postpaid).



Prevent Pest Damage With ORTHO Products
For the Home and Garden



Multi-Purpose
DUST

BOTANO Garden Dust. for use against many insects and diseases. Preferred by many, particularly for vegetables. One of the safest multi-purpose dusts that can be used. 10-oz. size is Dual Purpose package which also serves as handy garden duster. (Contains Rotenone).
10-Oz. Pump Gun Pkg.

60c

MULTI-PURPOSE BAIT

For Use Against
PRINCIPAL FORAGING PESTS

Slugs, cutworms, snails, earwigs, grasshoppers, strawberry root weevil. Baiting against these pests is easy with the new **BUG-GETA PELLETS** Compressed BAIT. (A Metaldehyde-Arsenical Bait.) 5000 baits in a 2 pound carton.

- 12 Oz. Carton 35c
- 2 Lb. Carton 60c
- 5 Lb. Carton \$1.25



RODENT CONTROL

ORTHO Rat Bait Pellets. Ready-to-use Red Squill Baits which are relatively harmless to humans and domestic animals. Poisoned Rats seek underground burrows before dying. Just as effective for killing mice.

- 2-Oz. Carton 30c

ORTHO Rodent Destroyer. Kills Gophers, Squirrels, Prairie Dogs, Rats, Mice. This bait is poisoned with strychnine by a special solvent process to assure lasting potency.

- 6-Oz. Carton 35c 1-Lb. Carton 70c

DOG REPELLENT

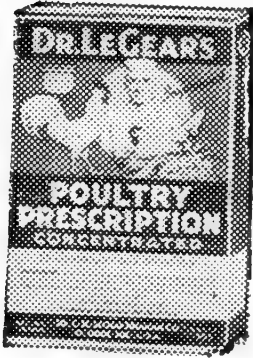
SCRAM Dog Repellent. A special powder used to keep dogs away from shrubs, flowers, lawns, store fronts, porches, etc. Easy to use. Does not harm animals.

- 8-Oz. Shaker 60c



All Prices Postpaid. For Larger Quantities or Other Items, Please Write.

Live Stock and Poultry Raisers



Attention



PRICES ON POULTRY PRESCRIPTION

For a 30 day supply, buy the following sizes:

12 Oz. Package (18 Hens). Postpaid	30c
1 Lb.-14 Oz. Package (45 Hens). Postpaid	60c
4 Lb.-8 Oz. Package (105 Hens). Postpaid	\$1.20

Larger Sizes:

15 Lbs.	\$3.00	100 Lbs.	\$15.00
--------------	--------	---------------	---------

F.O.B. Grand Junction.

PRICES ON COW PRESCRIPTION SAME AS POULTRY PRESCRIPTION

During the past 50 years, millions of Poultry and Livestock raisers have depended on Dr. LeGear's Prescriptions to help them get better results with their flocks and herds.

Dr. LeGear's concentrated Tonic Prescriptions for Stock, Poultry Hogs or Cows, when used regularly in the feed, promote proper feed consumption—which is absolutely necessary to obtain full production.

You Can Depend On

DR. LEGEAR'S PRESCRIPTIONS

FOR LIVESTOCK AND POULTRY

for first aid or protection against sickness, infection, internal or external parasites, or for treating injuries. Safe, effective and economical.

All Dr. LeGear's PRESCRIPTIONS are sold on a guarantee of satisfaction or your money back.



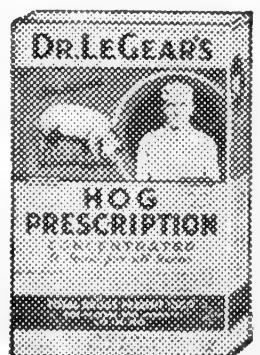
12 Oz.	30c
1 Lb.-14 Oz.	60c
4 Lb.-8 Oz.	\$1.20

Above Postpaid.

Larger sizes are f. o. b. Grand Junction.

15 Lbs.	\$ 3.00
100 Lbs.	15.00

Prices for Stock or Hog Prescription are the same.



BLATCHFORD'S NUTRI-TABS



PREVENT - CONTROL SCOURS

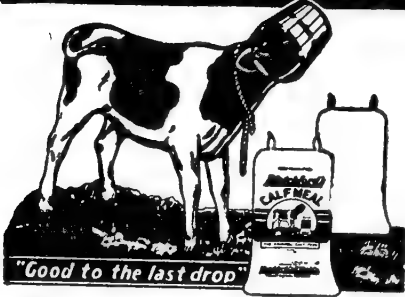
Nutrition tablets that prevent and control nutritional scours. . . Start day-old calves on Nutri-Tabs — feed one Nutri-Tab daily for the first weeks of life. Based on Wisconsin University research. Nutri-Tabs supply protective Vitamin A, Vitamin D and Niacin that all calves need to keep free of scours and rickets.

Feed 1 Tablets a day from birth, scours will be prevented, 2 to 3 Tablets a day will quickly stop scouring.

Box of 24 Tablets ----- 90c
 6 Boxes ----- \$5.00

Above, Postpaid.

The BLATCHFORD WAY



CALF MEAL

25 LBS. ----- \$1.60

25 Lb. sacks can be sent by parcel post. If wanted by mail add postage.

100 LBS. ----- \$6.20

Calf meal prices are f.o.b. Grand Junction.

Within the week of birth, start feeding calves Blatchford's Calf Meal
 During the months of rapid growth your calves must have extra vitamin, protein and mineral values available. They get these in Blatchford's Calf Meal
 You save on milk.



POULTRY LEG BANDS

We Have the Best Colored Leg Bands
 Made of Pyralin.

SIZE—	SINGLE COIL	PRICE:
4 Baby Chick	Colors: Red, Blue, Green, Pink, Yellow, White	Bunch of 50 For 30c
5 Baby Chick		
6 Baby Chick or Pigeon		Less Than Bunch Lots, 1c Each.
7 Bantam or Growing Chick	Specify first and second choice of colors.	
9 Leghorn		
11 Rocks, Reds, Large Leghorn	Bunch of 50 -----	35c
	Less than Bunch, 1c Each.	
12 Jersey Giants and Large Breeds	Bunch of 50 -----	40c
	Less than Bunch, 2c Each.	
14 Turkey and Geese	Bunch of 50 -----	55c
	Less than Bunch, 2c Each.	

NUMBERED BANDS Available in sizes 4, 5, 6, 7.
 Nos. 1 to 25 for ----- 39c
 Sizes 9 and 11, No. 1 to 50 for ----- \$1.10

Prices on Leg Bands are Postpaid.

MORE EGGS / IN 15 DAYS / OR MONEY BACK



Makes Feed More Complete
Tones Up Run Down Hens
Contains "TRACE ELEMENTS"

We guarantee this famous old reliable PRATT'S POULTRY REGULATOR to start more eggs coming in 15 days, . . . or money back, . . . because it contains rare essential minerals and "TRACE ELEMENTS" feeds may lack. It also tones up lagging, run-down birds. Result! Heavier flock production!

— SOLD BY —

Pratt's
POULTRY REGULATOR "HELPS HENS LAY"

75c Pkg. Mixes into 150 Lbs. Feed
\$1.35 Pkg. Mixes into 300 Lbs. Feed

Pratt's
Guaranteed Poultry and Stock Preparations

POULTRY WORM POWDER

A flock treatment for large round and cecum worms. Contains Phenothiazine and "shock-less" nicotine. Just feed it in the mash.

70c Package Treats 50 Hens

\$1.15 Package Treats 100 Hens

BAG OINTMENT

A soothing ointment with peculiar penetrating powers. For external use in the treatment of caked, swollen, or congested udders. Also used for cracked teats and skin.

8-oz. Jar, 60c

C-KA-GENE

ESTABLISHES IMMUNITY FROM BLOODY COCCIDIOSIS

Added to the mash and fed as directed on the package, Pratt's C-Ka-Gene builds up an effective and artificial protection to the disease during those weeks when infection is most likely to occur.

90c Package Treats 50 Chicks.

\$1.50 Package Treats 100 Chicks.

Pratt's
"Split-Action"
PATENTED
WORM CAPSULES

Each "Split-Action" Capsule does the work of two ordinary worm treatments, . . . delivering two different treatments right on the worms, hours apart. Pratt's Capsules also contain the new miracle wormer Phenothiazine that's 95 to 100% effective in killing and expelling cecum worms.

Pullet Size, 85c per 100.

Adult Size, \$1.20 per 100.

Less Than 100, 2c Each.

ZENE-A-TROL—Phenothiazine . . . the new "miracle" wormer for sheep, hogs, cattle and poultry.

One-Half Pound Pkg., \$1.00.

CHICK TABLETS

NEW . . . "They're Floated." Utterly different and far superior to other chick drinking water preparations. They make the water safe all day . . . not for just a few hours.

22-Quart Size, 35c—55-Quart Size, 70c

Write for prices on other sizes and items.



Ask for Free Poultry Health Guide

ALL PRICES ON THIS PAGE ARE POSTPAID

SAVE { **Milk**
Money
Time
Labor
Livestock } **With Calf Manna**

CALF MANNA FED CHAMPIONS

Start With a Tablespoonful a Day

Safe For All Young Animals



LAMBS 1/10 of a Pound Per Day
FULL RATION MaximumAnyAge

PIGS 1/6 of a Pound Per Day
FULL RATION MaximumAnyAge

DAIRY CALVES 1 Pound Per Day
FULL RATION MaximumAnyAge

BEEF CALVES 1 Pound Per Day
FULL RATION MaximumAnyAge

COLTS 1 Pound Per Day
FULL RATION MaximumAnyAge

USES FOR CALF MANNA

1. To replace nurse cows.
2. To help take care of orphan calves, colts, lambs, pigs, etc.
3. To help put the "Bloom" on show cattle and to help develop maximum spring of rib, depth of body and size.
4. To help develop maximum size and ruggedness in weaned calves.
5. For baby beef.
6. To aid recovery of appetite in animals that are off feed.
7. To assist in the case of slow breeders.
8. To reduce cost of raising dairy calves where milk is more expensive.
9. To hold the milk bloom on calves and to eliminate setbacks in late summer when the mother's milk supply is reduced.

In all the above-mentioned items CALF MANNA has been used and desirable results have been obtained in many cases reported.

What Calf Manna Contains

Calf Manna was first developed to feed calves that scoured and suffered high mortality when raised on milk.

Into Calf Manna go ingredients that supply definite amounts of Vitamin D and Vitamin G and Vitamin A. Into it goes a form of protein that seems to digest easily, along with other First Quality Grains, to make Calf Manna the IDEAL FEED IT IS.

25 Pounds, \$1.80

100 Pounds, \$6.80

F. O. B. Grand Junction

The 25-pound sack can be mailed in the First and Second Zone for 37c extra.

IT TAKES SO LITTLE — TO DO SO MUCH

Odorless
and
Contains
No
Fillers

**FOR GREENER LAWNS
BRILLIANT FLOWERS
MEATY VEGETABLES**

Lōma

THE QUALITY PLANT FOOD

For All
Types of
Plants
or
Soils

Depend on LOMA, the Quality All-Purpose Plant Food. Its perfectly balanced feeding works magic on field crops, vegetables, trees, flowers and lawns.

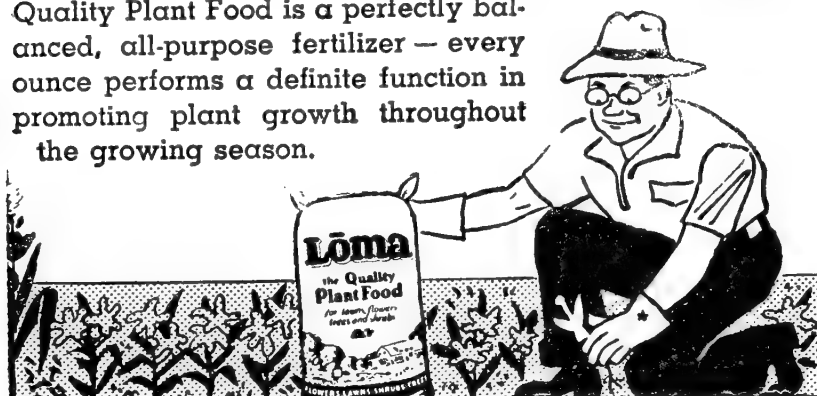
LOMA is a concentrated, complete and scientifically balanced plant food and, therefore, it should not be confused with any form of humus. Nor should LOMA ever be confused with Incomplete and Unbalanced fertilizers or other material such as bone meal or sewage products.

LOMA is not a by-product, but is especially manufactured for the purpose of plants to maintain healthy and sturdy growth.

LOMA is manufactured several months before being packed, and is cured and re-cured before being packaged.

All Crops Gain Abundant Health and Brilliance

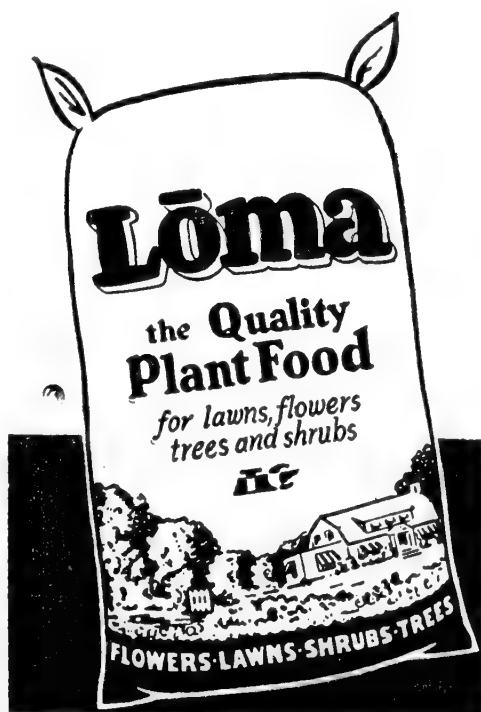
Feed Lōma, and your Lawns, Flowers, Gardens, Trees and Shrubs will radiate health and vivid color. For Lōma Quality Plant Food is a perfectly balanced, all-purpose fertilizer — every ounce performs a definite function in promoting plant growth throughout the growing season.



5 Lb. Package	-----	50c	} Postpaid
10 Lb. Package	-----	95c	
<hr/>			
25 Lb. Package	-----	\$1.50	} F. O. B. Grand Junction
50 Lb. Package	-----	2.50	
100 Lb. Package	-----	4.00	

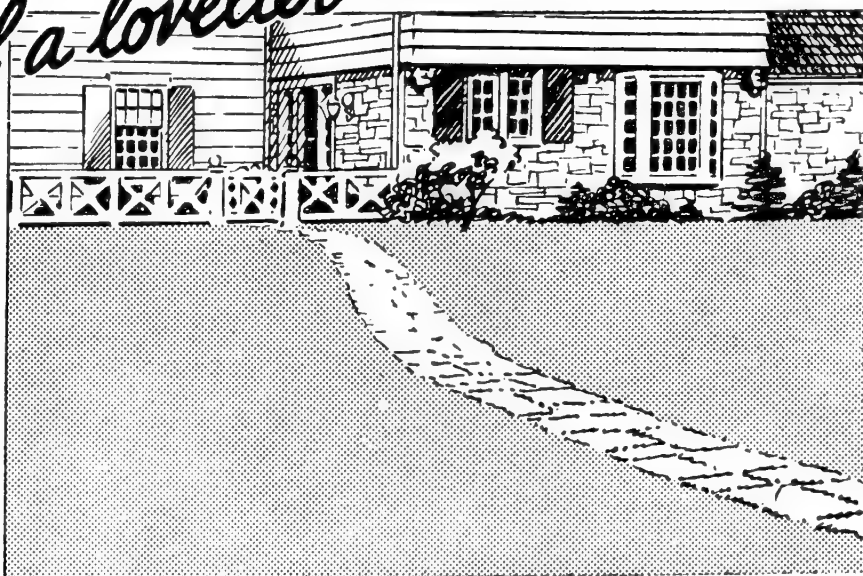
WRITE FOR PRICES ON LARGER QUANTITIES

ITS
PERFECTLY
BALANCED



CONTAINS
NO
FILLER

*To be sure
of a lovelier lawn...*



Plant Mile High Lawn Grasses!

ASTORIA BENT. Has very pleasing green color with blades of fine texture. It produces stolons or creeping runners lightly above and heavily below the surface. It is a good grass for lawns as well as golf greens.

1 Lb. \$1.75; 5 Lbs. \$8.25. Postpaid.

RED FESCUE. Genuine Red Fescue is creeping. It is a suitable grass for lawns and very desirable for putting greens. A beautiful dark green color.

1 Lb. \$1.50; 5 Lbs. \$7.00. Postpaid.

KENTUCKY BLUE GRASS. The most desirable grass for a beautiful lawn. The leaves are narrow and deep green in color. It forms a close, turf, is slightly creeping and quite hardy. It is recommended alone or in mixtures for lawn purposes.

1 Lb. 80c; 5 Lbs. \$3.75. Postpaid.

REDTOP. Belongs to the bent family. It grows rapidly and often thrives where Blue Grass fails. It does not compete with Blue Grass but supplements it; thriving in lime-poor and wet soils where Blue Grass is not at its best. It is useful in restraining the growth of weeds.

1 Lb. 35c; 5 Lbs. \$1.50. Postpaid.

WHITE DUTCH CLOVER. (*Trifolium Repens*).—That is a small, close growing, dwarf clover, used extensively in making lawns. It is a rapid grower of spreading habits and can be cut very close to the ground without injury to the plant. It starts regrowing at once after cutting. Very useful in lawn mixtures.

1 Lb. \$1.60; 5 Lbs. \$7.50. Postpaid.

DOMESTIC RYE GRASS. A quick growing annual, which does not have root-stalks nor stolons and does not form a compact sod. It affords a quick covering and is helpful as a nurse crop to other grasses.

1 Lb. 30c; 5 Lbs. \$1.25. Postpaid.

PERENNIAL RYE GRASS. A tufted, short-lived perennial. It does not form root-stalks or stolons and does not form a compact sod. It grows rapidly, making a quick covering and is used in lawn grass mixtures with Kentucky Blue Grass and Red Top.

1 Lb. 40c; 5 Lbs. \$1.75. Postpaid.

CRESTED WHEAT GRASS. Fairway Strain. Has finer and more leaves than the regular strain and can be used under dry land conditions as well as where more moisture is available. It can be used to fine advantage in lawns, fairways, school yards, parks, form lawns and makes a dense turf and fine appearing lawn. Sow one pound to 100 square feet.

1 Lb. 35c; 5 Lbs. \$1.50. Postpaid.

MILE HIGH LAWN GRASS MIXTURE. The best mixture to plant for the average lawn. Mile High Lawn Mixture is made up of permanent grasses that will start quickly and that make a good lawn the first year. May show a few coarse blades of grass the first year but these are soon crowded out by the finer grasses. For that good lawn plant Mile High Lawn Grass Mixture.

1 Lb. 80c; 5 Lbs. \$3.75. Postpaid.

For other Grasses and larger quantities see yellow order sheet or write. If you have special lawn problems ask us to help you.



GLADIOLI

All Large
Flowering Varieties
Chosen for Good
Color and Lots of
Blooms

Prices on Gladioli Bulbs
Are Postpaid

Plant groups of Gladiolus bulbs every two weeks from about April 15 to July 1 for bright masses of garden color—plenty of cut flowers all summer. Plant bulbs 4 to 6 inches deep and 6 inches apart. Dig bulbs in fall, allow to dry, then store in dry, cool place. Protect from frost. Water by trench method.

RED SHADES

BEACON—Salmon Scarlet, creamy throat.
FLAMING METEOR—Extra large red blooms.
DR. BENNETT—Scarlet throat.
REWI FALLU—Early rich deep red.

PINK SHADES

DUNA—Beautiful clear soft light pink.
PICARDY—Delicate apricot pink, slightly ruffled.
EARLY DAWN—Tall, large Geranium pink.

YELLOW SHADES

GOLD EAGLE—Early daffodil yellow.
APRICOT GLOW—Soft apricot yellow.

SALMON SHADES

MARGARET FULTON—A distinct early salmon.
ALADDIN—Big, bright salmon cream throat.

WHITE SHADES

SNOW PRINCESS—Immense, white.
MAID OF ORLEANS—Milky white, cream throat.

MISCELLANEOUS SHADES

BERTY SNOW—Bright lavender cream throat.
BARCAROLE—Tall, clear, orange, ruffled.
PELEGRINA—Early violet blue.
KING LEAR—Early clear deep purple, ruffled.
MOTHER MACHREE—Soft smoky lavender.

ABOVE NAMED VARIETIES ALL NO. 1 CHOICE BULBS

We reserve the privilege to substitute when necessary.

ANY OF ABOVE (7c each) 70c DOZEN

NUMBER 1 CHOICE MIXED BULBS. This mixture is made up of many varieties blended together to give you a gorgeous array of colors from the lightest shades to the deepest of reds and blues.

Prices on Mixed Glads:

(70 cents per dozen) (50 Bulbs, \$2.85) (100 Bulbs, \$5.20)

ALL BULBS POSTPAID.

NEW FLOWERS

For Your Enjoyment—And Worth While to Plant

ALYSSUM (H A)

825 Carpet of Snow. The pure white flowers are so freely produced on dwarf plants as to give the impression of a white carpet. A favorite variety for edging. While plants seldom grow over 4 in. in height, they spread considerably. Pkt. 5c.

ASTER (H A)

868 Aster Rainbow Mixture. 24 inches. A new strain of single asters producing large flowers of all the colors of the rainbow, except yellow, including many tones of blue and violet, rose and crimson, but without flesh pinks or white. Sturdy, upright growth. Pkt. 5c.

CACTUS FROM SEED

902 Mixed Varieties. Choice assortment of the most attractive, easily and quickly grown cacti. Make interesting pot plants. Pkt, 15c.

COSMOS Sensation, New Giant Early Strain

Early flowering, blooming in about 2 weeks from sowing. The flowers are very large, 4 to 5 inches across, with heavy fluted petals. Height about 4 feet. By disbudding, enormous flowers can be obtained.

973 Dazzler. Very rich, deep amaranth crimson. Pkt. 5c.

LUPINES (H P; 3 Ft.)

1040 Russell. Well rounded, thickly set spikes of the most extraordinary colors—blues, pinks, reds, yellows, purples, and other self-colors, also a beautiful assortment of bicolors, also a beautiful assortment of bicolors such as have never before been seen in lupines. Extra select mixture. Pkt, 10c.

MORNING GLORIES

1072 White Magic. Very early blooming, exceptionally free flowering, large fleecy white flowers, blending to cream deep in the throat, making a heavy cascade of flowers on fence or trellis. Of the Clarke's Early Type. Pkt, 5c.

1075 Scarlet O'Hara. Flowers are a carnelian red, sometimes called carmie, self color about 3½ inches across. Stays open longer than other sorts. Foliage is quite distinct, each leaf having one large and two small side lobes. Pkt, 5c.

NASTURTIUM (H A)

1098 Mahogany Gem. The darkest colored nasturtium we have ever seen; the velvet, brilliant flowers are rich, deep mahogany and very large. Gem Nasturtiums are the dwarfiest that grow. Pkt, 5c.

PETUNIA (H A 18 In.)

1122 White King. Showy clear snow white flowers. Pkt, 5c.

SAPONARIA VACCARI (A 2 Ft.)

1176 Saponaria. Vaccari Rose. Light graceful sprays of glistening pink flowers produced in greatest profusion. Pkt, 5c.

SWEET PEA (H A)

Giant Spencer Varieties

1211 What Joy. Deep, rich cream. Pkt, 5c.

1222 Red Boy. Pure rich crimson, long stems, vigorous. Pkt, 5c.

OTHER ITEMS ON PAGES AS LISTED:

GLADIOLUS	-----	Page 27
SPRAYERS	-----	Page 18
FERTILIZER	-----	Page 25
LAWN GRASS	-----	Page 26

A Few More NEW FLOWERS

TRITOMA (P)

Red Hot Poker

Tall spikes topped by narrow, tubular, pale yellow to orange-red flowers. August to October. For border and cutting. 3 to 4 ft.

1245 Pfitzer's Hybrids. Very large, brilliant red. Pkt, 10c.

VERBENA (H A 8 In.)

1246 Lavender Glory. A true lavender with a medium-sized creamy white eye. The color runs about 80% true. It is also distinctly fragrant. Pkt, 10c.

1247 Rose Glow. A solid deep rose red. Pkt, 10c.

VISCARA (A 1 Ft.)

Very showy and effective garden annual, producing freely throughout the summer large single flowers in red, white and blue shades. Very bright and effective for beds and useful for cutting.

1256 Choice Mixed. Pkt, 5c.

ZINNIA—DAHLIA FLOWERED (H A; 3 Ft.)

1266 Scarlet Flame. Large, beautiful bright scarlet. Pkt, 5c.

LILLIPUT ZINNIAS

The small, pompon-like flowers of Lilliput Zinnias are exquisite and most appealing. Plants are dwarf, bushy and very branching; 12 to 18 in. tall, and literally covered with double blooms.

1276 Canary Gem. Canary yellow.

1277—Crimson Gem.

1278 Golden Gem. Golden orange.

1279—Purple Gem.

1280 Rosebud. Rose pink.

1281 Salmon Gem. Salmon rose.

1282 White Gem.

Above Pkts, 5c.

DAHLIA BULBS

These Dahlia Bulbs are all northern grown. Good, strong, healthy tubers with good crowns. These Dahlias are all the large Decorative and Art Type.

AVALON—Beautiful clear yellow.

GALLIANT FOX—Velvety red, heavy stems.

GOLDEN GIRL—Shimmering gold.

HARVEST MOON—Blends of gold, rose and bronze.

RED JERSEY BEAUTY—Bright red.

WHITE KING—A leading pure white.

Above Dahlia Bulbs 30c each Postpaid

CHAUTAUQUA SALUTE—Dazzling White.

MRS. GEO. LE BOUTILLIER—Rich Velvety Red.

ORANGE JERSEY BEAUTY—Deep Orange.

MRS. IDE VER WARNER—Deep Mauve Pink.

This Group of Dahlies—35c each Postpaid

FLOWERS

CULTURE

A good sandy loam soil supplemented with well rotted manure and a small portion of commercial fertilizer is the ideal soil for flowers. Flowers will always do better if watered from a small trench dug along the sides of the plant.

DO NOT LET THE GROUND DRY OUT OR CRUST.

The following symbols are used in connection with each item:

- A—Annuals:** The plants live and bloom one season only.
B—Biennial: The plants live two seasons, often blooming the first year when planted early.
P—Perennial: The plants usually live from year to year.
H—Hardy: Plants that are easily grown and resist average seasonal extremes of temperature.
H-H—Half-Hardy.
T—Tender.

Approximate height of each plant is also given.

FLOWERS BEST ADAPTED TO VARIOUS USES

For Cut Flowers	Petunia	Swan River Daisy
Antirrhinum (Snap Dragon)	Stock	Verbena
Aster	Sweet Peas	For Partial Shade
Calendula	Sweet William	Balsam
Candytuft		Campanula
Carnation	For Window Boxes	Centaurea
Sweet Sultan	Antirrhinum	Clarkia
Chrysanthemum	Geranium	Columbine
Clarkia	Morning Glory	Godetia
Columbine	Nasturtium	Pansy
Cosmos	Petunia	Sweet William
Gaillardia	Phlox	For Withstanding Drought
Gypsophila	Verbena	Candytuft
Marigold		Cosmos
Nasturtium	For Rock Gardens	Four O'Clock
Shasta Daisy	Alyssum	Hollyhock
Stock	Columbine	Petunia
Sweet Peas	Carnation	Portulacca
Zinnia	Campanula	Verbena
For Fragrance	Candytuft	Zinnia
Alyssum	Dianthus	For Climbing
Candytuft	Gypsophila	Cypress Vine
Carnation	Phlox	Morning Glory
Centaurea	Portulacca	

We offer on the following pages a list of worthwhile flowers that are grown from seed. You will enjoy a flower garden. Plant one.

For Better Gardening Get Our Victory Garden Booklet. 15c, Postpaid.

AFRICAN DAISY

807—(HA 12-In.) Showy annuals. Fine daisy-like blooms. Good for rock gardens, edgings and cutting. Mixed. Pkt, 5c.

AGERATUM (HA 8-In.)

815 Purple Perfection. Attractive border plant. Pkt, 5c.

ALYSSUM

822 Little Gem. (HA) Small white flowers completely cover the dwarf compact plants, which grow only 4 to 5 inches tall. Wonderful for edgings. Pkt, 5c.

823 Gold Dust. (P-12-In.) Brilliant golden yellow flowers borne so profusely as to hide the plants. Pkt, 5c.

824 Alyssum Violet Queen. (HA 4-In.) A new edging plant with a color peculiarly its own, being of a very pretty violet tint much deeper in color than the Alyssum Lilac Carpet offered previously, does not fade in hot weather. Has the usual honey-like odor of the white variety. Pkt, 5c.

BRACHYCOME

899—Swan River Daisy. (HA 12-In.) Blooms nearly all summer. Fine for edgings, rock gardens or pots. Free flowering. Pkt, 5c.

BACHELOR'S BUTTON (HA 2 Ft.)

878 Red Boy. Deep glowing red. Pkt, 5c.

879 Blue Boy. True cornflower blue. Pkt, 5c.

880 Finest Mixed. (HA 2 Ft.) Pkt, 5c.

BALSAM

(HA 18-In.) Double flowers set thickly along the stems. Good border.

889 Camellia Flowered. Mixed. Pkt, 5c.

SCARLET RUNNER BEANS

895 Tall climber, large scarlet blossoms. (HA 8-Ft.) Pkt, 5c; 1/2 lb, 35c.

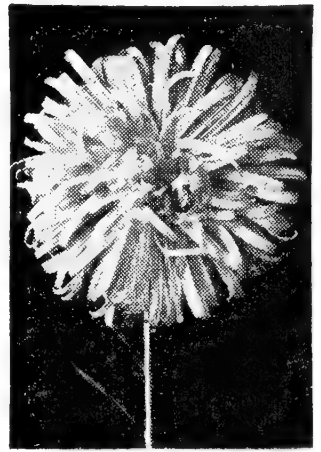
ASTERS

If YOU should have any trouble raising Asters—TRY OUR WILT RESISTANT STRAINS. Perhaps your soil is infested with aster wilt.

Early Giants

The finest large flowered heavy stemmed asters yet developed. Flowers are of the large Giants of California type. Plants 1½ ft. tall, with strong, heavy stems. Come into flower four to six weeks earlier than Giants of California.

- 833 Light Blue.
 - 834 Peach Blossom. Opens white, flushes, lavender pink.
 - 835 Rose Marie. Rich rose.
- Above Packets, 10c.



Improved Crego

Improved Giant Crego

(HA; 2 ft.) Very large, fully double flowers, 4 to 5 in. across, with long ribbon-like petals gracefully curled and twisted, giving them a lovely fluffy appearance. The plants are strong growing of branching habit. Long stemmed; fine for cutting.

- 839 Crimson. 841 Light blue. 843 Purple.
 - 840 Shell Pink. 842 White.
- Above Packets, 5c.

847 Mixed. Pkt, 5c; ⅛ oz, 20c; ¼ oz, 30c.

Queen of the Market

(HA; 20 in.) The earliest Aster, producing a profusion of fine blooms in early August.

- 854 Rose. 853 Purple.
 - 852 Crimson. 858 Mixed.
 - 855 Lavender.
- Above Packets, 5c.

Mixed Aster

865 All Double Varieties Mixed, wilt resistant. (H A).
Pkt, 5c; ⅛ oz, 15c; ¼ oz, 25c.

CALENDULA

(H A; 18 in.) Keep the flowers cut for continuous blooming. Make a late sowing in early July for flowers in cool weather; they stand light frosts.



Calendula Orange Shaggy

- 910 Orange King. Special tall cutting strain. Pkt, 5c.
- 912 Orange Shaggy. Fringed, shaggy appearance. Pkt, 5c.
- 927 Florists' Special Mixture. Large flowered, long stemmed varieties. Pkt, 5c.

CALIFORNIA POPPIES

(A; 12-15 in.) Plants of low spreading growth with finely cut silvery foliage. Do well in any well drained, loose soil and sunny position. Blooms early and continues until frost.

- 932 Aurantiaca. Bright orange. The true California Poppy. Pkt, 5c.
- 937 Brilliant Mixed. All the brightest colors. Pkt, 5c.

CANDYTUFT (H A—1 Ft.)

For beds, borders, edgings, rock gardens and cutting. Comes into flower quickly. For a continuous display, make several sowings 2 to 3 weeks apart.

948 Annual Varieties. Good mixed. Pkt, 5c.

CANTERBURY BELLS (HA—2 Ft.)

950 A new annual Canterbury Bell which blooms from seed in less than six months. Plants 2 to 2½ ft., bearing 6 to 8 flower spikes. Pkt, 5c.

CASTOR OIL BEAN—RICINUS (A—10 Ft.)

956 Mixed. A wonderful assortment of finest varieties with large leaves in green, red, and bronze. Pkt, 5c.

CLARKIA (H A—2 Ft.)

960 The lovely Clarkias are effective in the garden or as cut flowers. Produce great spikes of double and semi-double flowers in the daintiest colors. Pkt, 5c.

COCKSCOMB (A)

The name Cockscomb is derived from the resemblance of the flower head. The crested type thrives in light soil. Nice for edgings, borders or pots. Easily dried for winter use.

964 Dwarf Mixed. 8 to 10 inches. Pkt, 5c.

COSMOS (H A—4 Ft.)

While the early varieties begin blooming in July, the Cosmos reaches the height of its beauty in the autumn.

972 Early Klondyke. Orange Flare. Pure, vivid orange blooms. Pkt, 5c.

976 Early Double Crested. Form a perfect bush, massed with blooms of good size on long stems. Pkt, 10c.

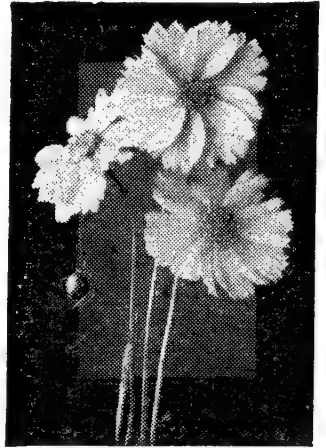
977 Early Flowering Mammoth Mixed. All colors. Pkt, 5c.

978 Giant Late Flowering. Mxd. Pkt, 5c.

ANNUAL CHRYSANTHEMUM (H A—2 Ft.)

Gorgeous flowers on long, stiff stems. Will produce freely until frost.

958 Double. Mixed colors. Pkt, 5c.



Early Klondyke,
Orange Flare

CARDINAL CLIMBER (A—15 Ft.)

952 Graceful, quick-growing climber, cardinal-scarlet blooms, 1 to 1½ in. across. Rich, glossy dark green foliage. Pkt, 5c.

CARNATION (P—20 In.)

This popular hardy Carnation blooms five months from sowing and continues throuout the season. Chabauds, Giant double strain.

955 Finest Mixed. Pkt. 10.

COLUMBINE (P—18 In.)

Beautiful spring-blooming plants of graceful, airy habit. They succeed in sun or half-shade and in any rich soil.

968 Rocky Mountain. State flower of Colorado. Pkt, 10c.

969 Dobbies Imperial Hybrids. Finest mixed. Pkt, 10c.

CUCUMBER VINE (A—10 Ft.)

971 Quickest growing climber on our list. It is thickly dotted over with white fragrant flowers. Pkt, 5c.

CYPRESS VINE (A—10 Ft.)

979 Cypress Vine. Scarlet and white, star-shaped blossoms, finely cut foliage. Pkt, 5c.

DAHLIA SEED (P—3 Ft.)

It is easy, most interesting and fascinating to grow dahlias from seed and enjoy the surprise of new colors and forms. If the seed is started early, plants will bloom the same season.

980 Double Fine Mixed. Pkt, 10c.

DELPHINIUM (P—4-6 Ft.)

Modern hybrid Delphiniums have become the dominant flowers in the perennial border of late June. If the bloom is cut down to the ground, a second flowering spike is produced.

984 Single Mixed. Medium tall hybrids. Pkt, 5c.

985 Dreer's De Luxe Hybrids. Choice mixed. Pkt, 10c.

DAISIES (B—6 In.)

For the best flowers, we recommend sowing seed each year and treating as an annual. Prefers moist but well-drained soil.

987 English Double. Low growing. Pkt, 10c.



Helichrysum

ORNAMENTAL GOURDS (A—10 Ft.)

Gourd fruits make attractive decorations at harvest festivals. Bird houses, dippers, bowls, and toys are made of others.

1008 Large and Small Sorts, mixed. Pkt, 5c.

EVERLASTING FLOWERS (H A—2½ Ft.)

Straw Flowers should be cut before the centers open, and be hung upside down in a cool, dark place to dry.

989 Helichrysum. Large compact flowers. A very nice blend of colors for winter bouquets. Pkt, 5c.

990 Everlasting Flowers. All varieties mixed. Pkt, 5c.

FOUR O'CLOCK (H A—20 In.)

Showy summer and fall blooming plants that do well everywhere.

995 All colors, mixed. Pkt, 5c.

FORGET-ME-NOT (A—18 In.)

Will bloom from May until frost and prefer cool, moist loam and half-shade. For beds, borders and rock gardens.

997 Amabile Bluebird. Pkt, 5c.

GEUM (P)

Dainty double blooms from June to September. Needs protection in cold sections, or treat as annuals by starting seed indoors. 1½ to 2 ft.

1002 Mrs. Bradshaw. Large, double, fiery scarlet flowers. Pkt, 10c.

GODETIA (A—12 In.)

Bushy plants with masses of large, colorful blooms during the summer and fall; suited for beds, borders and cutting. Thrive best in cool, moist, half-shady situation.

1006 Dwarf Double Azalea Flowered. Finest mixed. Pkt, 5c.

1007 Dwarf Single. Exquisite mixed. A very showy plant. Pkt, 5c.

GYPSOPHILA—BABY'S BREATH

Graceful plants of light fairy-like growth. Much in demand for cutting and combining with other flowers for bouquets and vases. Use dry in winter bouquet.

1010 London Market Improved. White, extremely large flowers. (Annual, 1½ ft.) Pkt, 5c.

1011 Carminea. Deep rose. (Annual, 1½ ft.) Pkt, 5c.

1012 Paniculata Single. White. (Perennial, 3½ ft.) Pkt, 5c.

HIBISCUS (P—3-5 Ft.)

1015 In late summer, when perennials are few, well established plants bear their beautiful single flowers for several weeks. Pkt, 5c.

HOLLYHOCKS (H P—5-8 Ft.)

1022 Prize Double Mixture. Pkt, 5c.

HYACINTH BEANS (A—10 Ft.)

1025 If you have a wire fence which you want covered, we know of no plant which would be more decorative than this. The flowers stand upright. Pkt, 5c.

LARKSPUR—GIANT IMPERIAL

(A—4 ft.) These Larkspurs are ideal for cutting, as the flower stems branch from the ground. Double flowers are compactly placed on the long upright stems.

1032 Daintiness. Lavender.

1034 Blue Spire. Deep violet.

1033 Carmine King.

1035 Mixed.

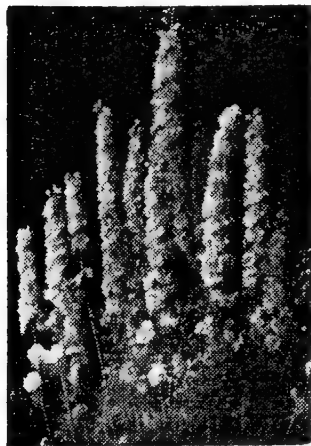
Above Packets, 5c.

LINUM (A—24 In.)

1037 Crimson Flax. Brilliantly colored summer annuals, glowing crimson-rose. Pkt, 5c.

LOBELIA (H A—4 In.)

Highly desirable for edgings, ribbon bedding and garden decoration as well as for pot culture.



Larkspur
Giant Imperial

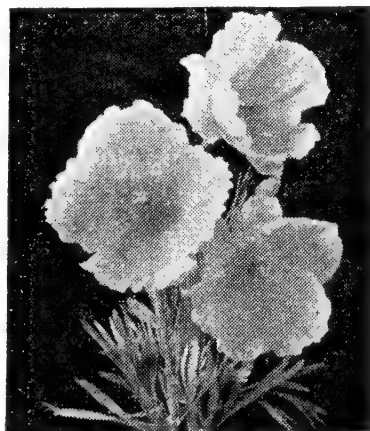
1038 Crystal Palace. Dark blue, Bronze foliage. Pkt, 10c.

MEXICAN TULIP POPPY

1024 Sunlite. (A—1½ ft.) Semi-double, clear canary yellow blooms with red stamen. The extra rows of short petals are on the outside instead of the inside of the bloom. The blooms, cut when first open, often last a week in the house. Pkt, 5c.

**MEXICAN FIRE BUSH
(H A—2 Ft.)**

1065 Symmetrical oval plants, resembling an ornamental evergreen. Fine for hedges. Turns carmine in fall. Pkt, 5c.



Sunlite

MIGNONETTE (A—1 Ft.)

Grown for its charming fragrance. Excellent for cutting.

1066 Special Mixture. All Machel varieties. Pkt, 5c.

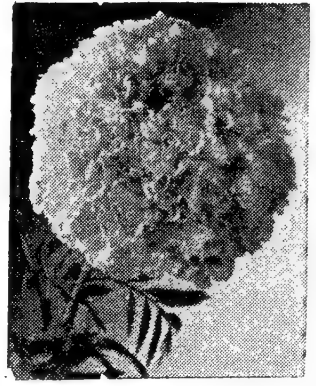
MOONFLOWER VINE (A—15 Ft.)

1069 Covered with large flowers every evening and on cloudy days. Finest mixed. Pkt, 5c.

MARIGOLD (H A)

A wealth of color in late summer and fall, unequalled by any other flower. Easy to grow in ordinary garden loam and a sunny location.

- 1044 Orange Supreme. Deep orange. (2½ ft.) Pkt, 5c.
 1045 Yellow Supreme. Creamy lemon yellow. Pkt, 5c.
 1047 Tall Varieties. Mixed. (3 ft.) Pkt, 5c; ⅛ oz, 15c; ¼ oz, 25c.
 1048 Mission Giant Yellowstone. Large, double, incurved chrysanthemum-like, clear golden yellow flowers, 2½ in. across, freely borne on 2 ft. vigorous growing plants from late summer until frost. Pkt, 10c.
 1049 Sunset Giant. Rich mixture, (3 ft.) Pkts, 5c.
 1050 Pot O' Gold. A mass of intense dazzling gold on compact growing plants. The 4- to 4½-inch flowers of the gigantic formation are freely borne on 12- to 15-inch plants. 100 per cent double; a garden favorite for showiness, fragrance and exceptional size. Pkt, 10.
 1054 Dwarf Varieties. Mixed (1½ ft.) Pkts, 5c; ⅛ oz, 15c; ¼ oz, 25c.
 1057 Harmony Hybrids. New strains in the popular crested center type. 12- to 14-inch plants, with 1¾-inch flowers in
 1060 Butterball. Bronze Medal Winner, All-America Selections. Small, canary-yellow, scabiosa-like flowers, 1¼ in. across, cover the plants which grow about 8 in. tall. Pkt, 5c.
 1061 Sunkist. All-America Silver Medal Winner. Plants grow 6 to 8 in. high and are covered from early in the summer until frost with attractive, round double flowers, 1½ to 2 in. across, of a deep orange color. Neat, compact plants. Pkt, 5c.



Sunset Giants

MORNING GLORIES (A—15 Ft.)

Easily raised, quick growing climbers succeeding in any soil and location. Fine for trellises, arbors, porches and poles. Free and continuous blooming.

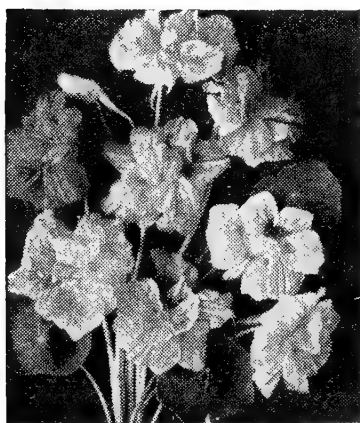
- 1073 Double Rose Marie. Double, deep rose flowers. Early and free-blooming. Pkt, 5c.
 1074 Clarke's Earliest Heavenly Blue Morning Glory. Sky blue, shading golden yellow in throat. Pkt, 5c.
 1079 Extra Fine Mixed. Pkt, 5c.

NIGELLA—LOVE-IN-A-MIST (A—18 In.)

- 1107 One of our prettiest old-fashioned annuals with attractive double flowers. Mixed. Pkt, 5c.

NASTURTIUM (H A)

Nasturtiums will really grow on soils incapable of supporting any other plants, and are most useful on dry, sandy, or gravelly banks.

Nasturtium
Gleam Hybrids

- 1086 Scarlet Gleam. Sweet scented double. Pkt, 5c; oz, 25c.
 1085 Golden Gleam. Sweet scented double. Pkt, 5c; oz, 25c.
 1090 Gleam Hybrid. Mixed colors. Pkt, 5c; oz, 25c; ¼ lb, 65c.
 1094 Dwarf Single. Mixed colors. Pkt, 5c; oz, 20c; ¼ lb, 65c.
 1100 Gem or Globe Dwarf Double. More compact than Gleam types. Same fragrant double flowers. Pkt, 5c; oz, 25c.
 1095 Tall or Climbing. Pkt, 5c; oz, 20c; ¼ lb, 65c.

NEMOPHILA—BABY BLUE EYES (A)

- 1102 Quick grower; early bloomer. Charming for edgings and rock garden. 6 to 8 in. Pkt, 5c.

NIEREMBERGIA (H-H, P)

- 1106 Purple Robe. In the short time it has been on the market, has certainly proved itself a popular rockery and edging plant. The compact plants are extremely free flowering. The small, cup-like blooms of deep violet retain their rich coloring throughout the heat of summer. For best results, start seeds in flats. Will bloom about fifteen weeks from sowing. Pkt, 15c.

PANSIES (H A—6 In.)

Our Pansy seeds are high altitude, Colorado grown. Selected from plants of outstanding size and bloom.

Keep flowers picked during the summer and you will get a nice lot of flowers again in the fall. For earliest blooms, start seed indoors.

- 1109 Mile High Giant. Super Swiss mixture. Pkt, 20c.
 1112 Large Flowering. Finest mixed. Pkt, 10c.
 striking color combinations. 100 per cent double. Pkt, 5c.

PETUNIA (H A—18 In.)

In dry season or wet, the petunia is the most adaptable, long flowering and colorful of the garden annuals.

- 1116 **Hollywood Star.** Unique shaped flowers having five-pointed star-shaped petals which are deep rose with golden yellow throat. Early and free flowering. Pkt, 5c.
- 1117 **General Dodds.** Blood red. Pkt, 5c.
- 1118 **Howard's Star.** Reddish purple, white star. Pkt, 5c.
- 1119 **Violocea.** Deep violet. Pkt, 5c.
- 1120 **Heavenly Blue.** Blooms are a rich light blue and cover the compact plants. Pkt, 10c.
- 1121 **Radiance.** Rich cerise-rose with enough underlying salmon to intensify its brilliance; all in lovely contrast to the brown veined golden yellow throat. Pkts, 10c.
- 1124 **Large Flowered Bedding (Balcony).** Mixed. Pkt, 10c.
- 1127 **Ruffled Monsters.** Half dwarf type of erect and robust habit. The flowers are very large ruffled, with open shallow throats. The colors are mostly the desirable red and dark shades, richly marked and veined. Pkt, 20c.
- 1123 **Burgundy.** Rich wine red, contrasting white throat. Very large, single. Pkt, 15c.
- 1126 **Theodosia.** Largest fringed rose, gold throat. Pkt, 20c.
- 1130 **Balcony Hybrids.** Mixed. Pkt, 5c.
- 1132 **Double Giants of California.** An improved strain of Double Petunia. About 80 per cent of the blooms will come double from seed and the balance will be choice large single flowers, mostly ruffled. The weaker seedlings should be carefully saved, as these invariably produce the best double flowers. About 200 seeds per packet. Pkt, 50c.

PHLOX (H A—12 In.)

One of the easiest grown annuals. No other flower can surpass their brilliant colorings. Fine for bedding, borders, edgings and cutting.

- 1133 **Art Shades.** Very large flowered new strain, all with large light eye. Pkt, 10c.
- 1138 **Finest Mixed.** From named varieties. Pkt, 10c.

PINKS (H A—12 In.)

Brilliantly colored flowers for beds, borders, rockeries, edgings and cutting

- 1142—**Laciniatus.** Double mixed. Double, fringed and lacinated flowers. Pkt, 5c.
- 1143 **Single Mixed.** Pkt, 5c.

PINKS (P—15 In.)

- 1141 **Clove or Grass Pinks.** The old fashioned Garden Pink. Double and single flowers. Mixed colors. Pkt, 10c.

PORTULACA—MOSS ROSE (H A)

Forms a beautiful floral carpet, about 6 in. high, even in dry, sunny places.

- 1168 **Single.** Pkt, 5c. 1169 **Double.** Pkt, 10c.

PAINTED DAISY—May-June (P—18 In.)

They are wonderful for cutting. The fern-like foliage plants are beautiful even when not in bloom.

- 1171 **Giant Single Mixed.** Pkt, 10c.

POPPIES—PERENNIAL

The colorful beauty of perennial poppies assures them a place in every garden. They are of easy culture, in slightly moist but well-drained soil, and in full sun. The seed is best sown where the plants are to bloom. Poppies for cut flowers should be treated to make the blooms last longer. After cutting, stems should be burned or dipped in hot water.

- 1147 **Giant Art Shades.** This mixture is outstanding. Flowers are beautifully fluted and soft-textured in lovely pastel shades of apricot, cream, gold, pink, white and shades of rose. Plants have strong wiry stems up to 30 inches tall and bloom heavily. Pkt, 15c.
- 1148 **Iceland Poppy.** Single mixed. (15 in.) Pkt, 5c.
- 1157 **Oriental Mixed.** (3 ft.) Pkt, 10c.

POPPIES—ANNUAL

Sow them early—since they defy frosts—and where they are to bloom, as they dislike transplanting.

- 1159 **American Legion.** Brilliant scarlet, white maltese cross. (2 ft.) Pkt, 5c.
- 1160 **Single Shirley.** Finest mixed. (2 Ft.) Pkt, 5c.
- 1161 **Double Begonia Flowered Sweet Briar** is a delightful shade of deep rose pink. Pkt, 5c.
- 1162 **Double Begonia Flowered Mixed.** Flowers resemble the double tuberous-rooted Begonia in shape. Pkt, 5c.

ROCK GARDEN MIXTURES

- 1175 **Annual Finest Mixed.** Pkt, 5c.

SALPIGLOSSIS (A—30 In.)

One of the easiest of annuals to grow, the Salpiglossis is rich in deep color tones rare in the floral world. Sow in the full sun in fairly rich soil as early as possible, and preferably in the place where it is to grow, to avoid transplanting. 1179 **Mixed Colors.** Pkt, 5c.



Salpiglossis

SCABIOSA—MOURNING BRIDE (A—3 Ft.)

Does well in different kinds of soil. Blooms from midsummer until frost if flowers are not allowed to go to seed. Lasts well and is one of the nicest flowers for cutting.

1185 Giant Flowered Hybrids Mixed. Large flowers, unusual colors, ball shaped. Pkt, 5c.

SCHIZANTHUS—BUTTERFLY FLOWER (A—1½ Ft.)

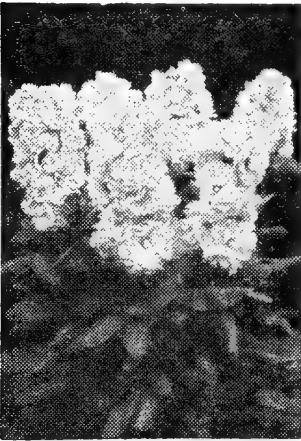
1186 Beautiful bushy plants with finely lacinated foliage and hundreds of butterfly-like blooms. For beds, borders and pot culture. Quick to flower. Finest mixed. Pkt, 10c.

SNAPDRAGON—RUST PROOF (2½ Ft.)

Snapdragons have always been universal favorites for color in the garden, and as cut flowers. Of easiest culture, succeeding in full sun or semi-shade. The gorgeous flowers are freely produced for several months. If you have found Snapdragons difficult to grow, rust is probably responsible. Rust is a widespread disease which discolors the leaves and saps the vitality. Growing the Rust-proof strain, difficulties disappear. Seeds germinate better; plants are more vigorous, the foliage clean, flowers large and of fine color and the flowering season prolonged.

1194 Finest Mixed. Pkt, 5c.

1199 Super Majestic. Finest mixed. Pkt, 10c.



Stocks Ten Weeks

STOCKS, ANNUAL

Heavy spikes of fine, double, fragrant flowers, in a wide range of soft and distinct shades. Fine for bedding, borders and cutting. Start seeds early indoors. Do best in rich, well-limed soil and in cool localities.

1205 Early Giant Imperial. (26 in.)

Plants of branching habit, double flowers. Mixed. Pkt, 10c.

1207 Dwarf Ten Weeks. About 12 in. high. Pkt, 5c.

SWEET PEAS (H A)**Giant Spencer Varieties**

- | | |
|---------------------------------------|--|
| 1212 Capri. Clear, silver blue. | 1217 Prince of Orange. Best deep orange. |
| 1213 Gigantic. Best white. | 1218 Welcome. Dazzling scarlet. |
| 1214 Highlander. Fine clear lavender. | 1219 Warrior. Dark maroon |
| 1215 Pinkie. Large rose pink. | 1220 Bonnie Briar. Large rose pink. |
| 1216 Olympia. Rich purple. | |

Above Packets, 5c.

1228 Mile High Fantasy Mixed. Made up of the choice large flowering Spencer varieties that are heavily veined and mottled. Pkt, 5c; oz, 25c.

1230 Giant Spencer. Pkt, 5c; oz, 20c.

1234 Early Flowering Spencer Mixture. Pkt, 5c; oz, 30c.

Perennial Sweet Peas

1235 Very decorative climbing vines of the Pea family for growing on fences, trellis, etc., and for cutting. Blooms all summer, if seed pods are removed. Finest mixed. Pkt, 5c.

SWEET SULTAN (A—2½ Ft.)

Most desirable for garden decoration and cutting. They bloom freely for many weeks during the summer; succeed best in rich, well-drained soil. The large, long-stemmed, sweet-scented flowers are exquisitely fringed and most graceful in appearance. Plants do well in full sun.

1237—Giant Sweet Sultan. All colors mixed. Pkt, 5c.

SWEET WILLIAM (B—1½ Ft.)

Old garden favorites with large, showy flower-heads composed of numerous good-sized individual blooms.

1240—Single. Finest mixed. Pkt, 5c.

1241 Double. Finest mixed. Pkt, 5c.

VERBENA (H A—8 In.)

These are colorful annuals for some sunny spot in the border. In bloom continuously. They make gay bouquets for table decorations. Do not sow the seed outdoors until the soil gets warm. May also be started indoors to advantage. Spreads to 2 feet across.

1248 Lucifer. Brilliant scarlet. Pkt, 5c.

1249 Purple Mantle, White Eye. Pkt, 5c.

1250 Finest Mixed. Balanced mixture giant flowers. Pkt, 5c.

FROM -----

STREET OR R. F. D. NO.-----

P. O. -----



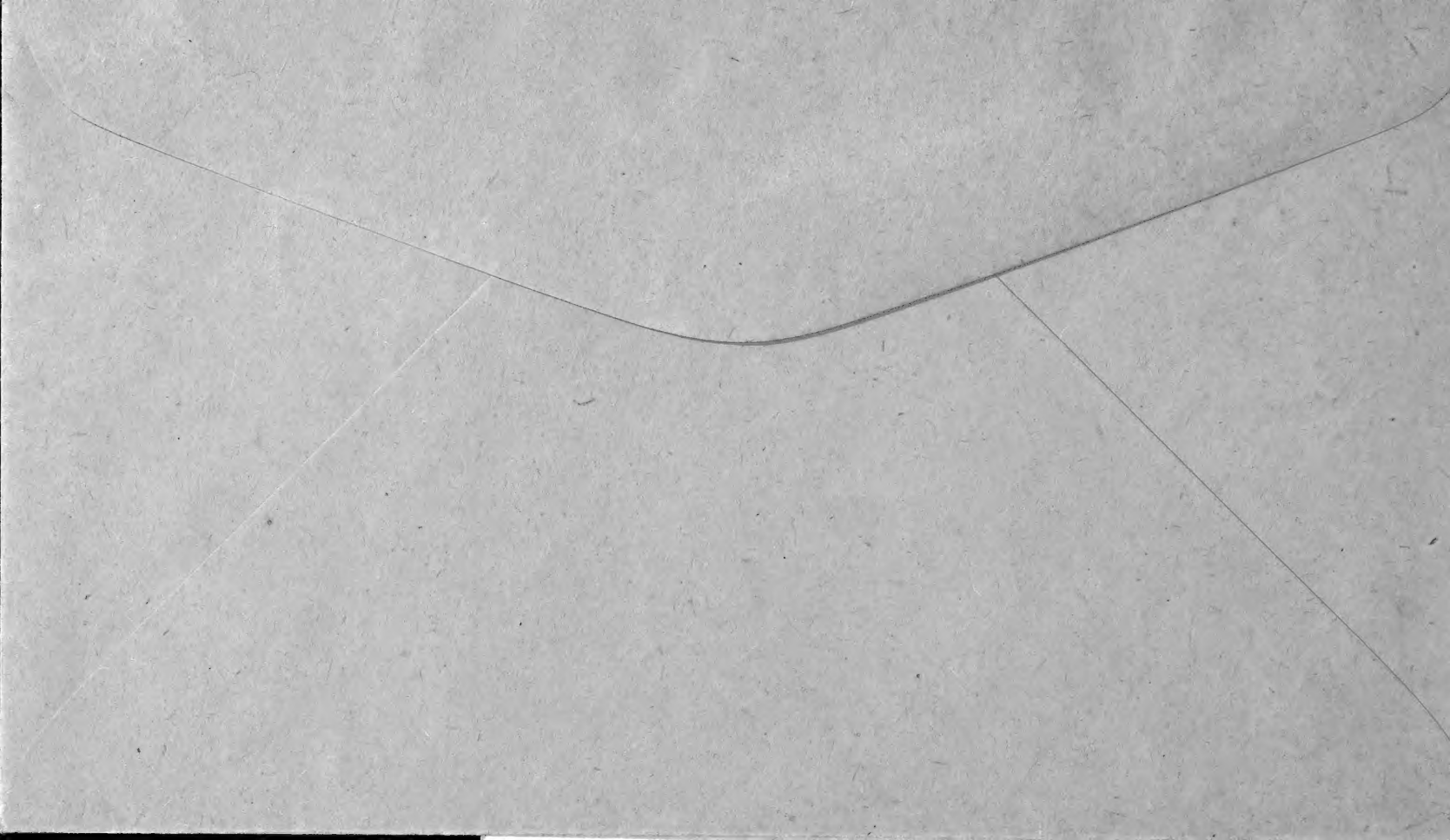
THE MILE HIGH SEED CO.

Home of Mile High Seeds

Grand Junction,

Colorado

*—The Seeds that have made
Western Colorado Famous!*



SALVA—SCARLET SAGE (H A; 24 In.)

1180 The Scarlet Sage is one of the most brilliant bedding plants; blooms from early summer until frost. Popular for beds, borders, edgings and pot culture, may be used for cutting. Packets, 10c.

SHASTA DAISY (P; 2½ Ft.)

Suitable for borders and cut flowers, doing best in moist, well-drained locations. Extremely hardy; easy to grow.

1187 Shasta Daisy Conqueror. Flowers very large, pure white, stems 2½ ft. Pkt, 5c.

SNOW ON THE MOUNTAIN (H A; 3 Ft.)

1200 Colorful foliage plants which add beauty to the tall border. Fine for foundation plantings and groups, doing best in a sunny location. Easily grown. Bright green leaves veined and attractively margined white; topmost leaves almost all white. Pkt, 5c.

VIOLA (P; 6 In.)

1254 Smaller than pansies but have a longer blooming season. Blooms first year from seed. Mixed. Packets, 10c.

VINCA ROSEA (Periwinkle) (B)

1255 Ornamental free-blooming plants, with dark laurel-like foliage and handsome pink and white flowers. See germinates slowly but if sown early plants will bloom the first summer. They can be taken up in the fall, potted, and kept in bloom for the winter. (1 ft.) Mixed. Pkt, 5c.

ANNUAL WALLFLOWER (15 In)

1257 Lovely sweet-scented flowers, their oriental colorings of red, brown, mahogany and yellows being most effective in the garden or when cut. Easily grown anywhere. Unusual colors, always admired. Finest mixed. Pkt, 5c.

ZINNIAS—DAHLIA FLOWERED (H A; 3 Ft.)

The broad petals are closely imbricated, sometimes seemingly almost to be piled one upon the other; the flowers often 4 inches in depth and 6 inches in diameter, resembling Show Dahlias.

1260 Crimson Monarch. Deep crimson.

1261 Polar Bear. Large creamy white.

1262 Dream. Deep rosy lavender.

1263 Illumination. Deep rose.

1264 Purple Prince. Deep purple.

1265 Canary Bird. Rich canary yellow.

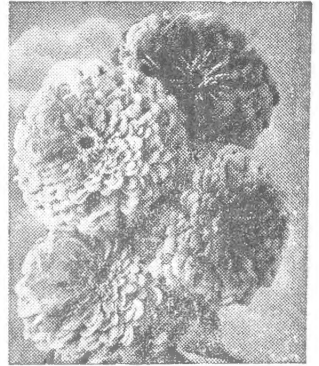
1267 Luminosa. Bright deep pink.

1268 Oriole. Orange and gold bicolor.

Above packets, 5c.

1270 Mixed. Many varieties.

Packets, 5c; ½ oz, 30c; 1 oz, 55c.



Zinnia Dahlia
Flowered Mixed

ZINNIA SUPER CROWN O'GOLD PASTEL TINTS

1274 This is the very finest large flowered Zinnia introduction since the original Dahlia Flowered. Flowers are large and showy, 5 to 5½ inches in diameter. Strictly a mixture of pastel tints, it contains a wide range of pastel shades, including soft yellow, old gold, light pink, apricot pink, various shades of salmon, peach and buff, lively cerise salmon, as well as pure white and cream. All of the flowers carry the characteristic Crown O'Gold markings, that is, each petal of the flower is overlaid at the base with a deep golden yellow while carrying out the individual flower color at the tip. Plants are strong and robust, growing about 3 feet tall. Flowers are borne profusely throughout the season. Pkt, 5c.

LILLIPUT ZINNIAS

The small, pompon-like flowers of Lilliput Zinnias are exquisite and most appealing. Plants are dwarf, bushy and very branching: 12 to 18 in. tall, and literally covered with double blooms, 1 to 1½ in. across. Nice as edgings to other plants or taller growing zinnias.

1282 Finest Mixed, from named varieties.

Pkt, 5c; ¼ oz, 20c; 1 oz, 60c.

TOM THUMB ZINNIA

Plants 4"-6", compact, covered with well formed flowers of the Lilliput type. Colors range through the red, orange, yellow, pink, rose and other pastel shades. Excellent for pot plant and border use.

1290 Finest Mixture, Pkt. 5c.

CRESTED ZINNIA

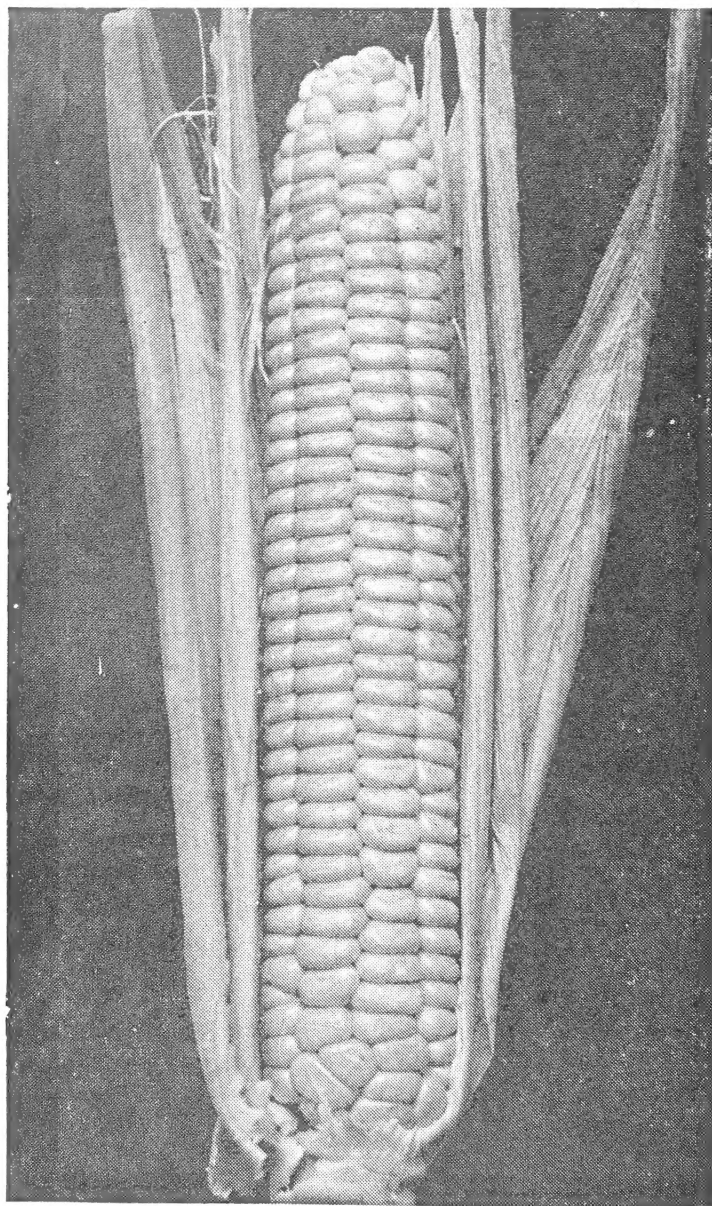
1275 Plants. 2½ ft. On a single corona of outside petals stands a semi-globular crown with a large number of small florets giving a most interesting effect, similar in form to the flowers of the Scabiosa. Mixed colors. Pkt, 5c.

HIGH ALTITUDE GROWN
Garden - Flower and Field - Seeds



Planting Selected Onion Bulbs for Seed

Our Specialty
Yellow and White Sweet Spanish and Mt. Danvers
Famous for Heavy Yields and Fine Quality



Hybrid Sweet Corn. Tendergold. See Page 5.

QUALITY FIRST—ALWAYS